

# COLIN COOKE



COLIN COOKE LTD  
PO BOX 602, ALTRINCHAM, WA14 5UN  
TELEPHONE: 0161 927 9524  
website: [www.colincooke.com](http://www.colincooke.com) email: [coins@colincooke.com](mailto:coins@colincooke.com)



MAY 2026



**Managing Director – Lee Brownson**

**Callers by appointment only, as coins are not kept on the premises.**

**Hours of Business: Mon – Sat only. 8.00am. to 4.30pm. (Sat only to 12.00pm.)**

**Tel - 0161-927-9524**

**WhatsApp - 0161-927-9524**

**E-Mail - [coins@colincooke.com](mailto:coins@colincooke.com)**

**Address - COLIN COOKE LTD, PO BOX 602, ALTRINCHAM, WA14 5UN**

LEE BROWNSON will attend to your Telephone/E-mail/Letter orders.

Replies can be addressed directly to any of us at the address given on the front cover.

Postage will be added to all orders.

**Cheques - should be made payable to Colin Cooke Ltd.**

**Cards – All major Credit and Debit card's accepted.**

**Bank Transfer - Natwest, Underbank Hall Branch, Stockport**

**Colin Cooke Ltd, Account No: 54651239, Sort Code: 01-08-38**

**Email PDF Lists**

We are now able to offer this list and all future lists by email in a PDF format.

If you would like to receive the PDF version in full colour, please send us an email so that we then have your email address on record and we can add you to the email mailing list for future lists.

**VISIT OUR WEBSITE**

**At**

***[www.colincooke.com](http://www.colincooke.com)***

**Our website has thousands more pictures for you to view and is an invaluable reference for any coin collector.**

**All coins can be viewed in full colour on our website.**

**HAMMERED GOLD**1. **Edward IV Ryal or Rose Noble.**

Light coinage, 1464-70. London.  
S1950. N1549. mm Crown.  
GVF, slightly crinkled and probably a  
detector find. **(illustrated)** £3,750.00

2. **Charles I Gold Double-crown.**

Tower Mint. Group E. Class II.  
Fifth bust, bust 9, smaller  
'Aberystwyth' bust. 4.68g.  
Mm Triangle over Anchor, 1638-40.  
S2705. N2173.  
GVF for issue. **(illustrated)** £3,950.00

3. **Henry VII (1485-1509) Angel.**

mm Pansy (1495-8). Type III.  
New dies, angel with both feet on  
dragons. S2183. N1696. 5.16g.  
GEF, well struck. Ever so light crease  
but now straightened.  
**(illustrated)** £4,500.00

**MILLED GOLD****SOVEREIGNS**

4. 1898 Victoria Sovereign. S3874.  
Old veiled bust. St. George and  
dragon. London Mint.  
Choice Virtually Mint State, fields  
prooflike. **(illustrated)** £895.00

**HAMMERED SILVER**5. **1552 Edward VI Crown.**

Third Period, 1550-3.  
Fine silver issue. Mm Tun.  
E of legend over retrograde 1.  
Weight 30.34g. S2478. N1933.  
About VF, some parts better.  
(Although not differentiated in Spink,  
1552 is in fact much rarer than  
1551!!) **(illustrated)** £2,750.00



**HAMMERED SILVER (CONTINUED)****6. James I Crown.**

Third Coinage, 1619-25. S2665.  
 Plume over Shield. mm Lis 1623-4.  
 King on horseback with grass ground  
 line. Bold GVF, some parts better,  
 small flan crack from strike.  
**(illustrated)** £4,250.00

**7. Charles I Crown.**

Group III, third horseman, type 3b.  
 Tower Mint. Mm Portcullis, 1633-4.  
 29.77g. N2196. S2759.  
 GF - Near VF **(illustrated)** £1,750.00

**8. Charles I TRURO Crown.**

TRURO Mint, 1642-3. Mm Rose.  
 28.41g. S3045. N2533.  
 VF, some parts better  
**(illustrated)** £2,750.00

**9. Charles I Halfcrown. Tower Mint.**

Group II, second horseman. Type 2c.  
 Smaller horse, cross on housing,  
 plume on horse's head only.  
 Oval draped shield with CR at sides.  
 Mm Portcullis, 1633-4. 15.08g.  
 S2771. N2207. GF - Near VF £250.00

**10. Charles I Halfcrown. Tower Mint.**

Group III, third horseman. Type 3a1.  
 Scarf flying from King's waist.  
 Oval garnished shield.  
 Mm Crown, 1635-6. 14.28g.  
 S2773. N2209. GVF £450.00

**11. Charles I Halfcrown.**

Tower Mint Under Parliament.  
 Group III, third horseman. Type 3a3.  
 No Ground Below.  
 Oval garnished shield.  
 Mm Sun, 1645-6. 15.24g. S2778.  
 N2213. Near VF/VF, toned  
 Sold with old collectors ticket £395.00

**HAMMERED SILVER (CONTINUED)**

12. Charles I Shilling. Tower Mint.  
Group C, third bust, type 2a, with more visible armour.  
Mm Plume, 1630-1. 5.92g. N2221.  
S2787. VF or better, bright.  
**(illustrated)** £750.00



13. Charles I Shilling. Tower Mint.  
Group D, fourth bust, type 3.1, with falling lace collar, inner circles.  
Mm Harp, 1632-3. 6.01g. N2223.  
S2789. GVF, a little weak on the portrait.  
£350.00

14. **Charles I Aberystwyth Shilling.**  
ABERYSTWYTH Mint.  
mm Book, 1638-42.  
Large Plume and large XII. 5.83g.  
S2883. N2331. VF, some striking flaws. Bold for this very rare type.  
**(illustrated)** £1,850.00



15. 1561 Elizabeth I Sixpence.  
With rose and date. Small bust 1F.  
Mm Pheon. Weight 2.81g. S2560.  
N1997. Bold GVF, pleasing portrait.  
Scratches in front of the bust.  
**(illustrated)** £375.00



16. 1564/2 Elizabeth I Sixpence.  
Milled Coinage. Large broad bust.  
mm Star. 2.87g. S2597. N2028.  
Near VF, creased and straightened.  
£295.00

17. Henry VI, First Reign, 1422-61 Groat.  
Annulet issue, 1422-c.1430.  
Calais Mint. Annulets at neck.  
S1836. N1427. 3.77gm.  
mm Incurved pierced cross both sides (1422-7). VF or better £275.00

18. Henry VIII, 1509-47 Groat.  
Second Coinage, 1526-44.  
Tower Mint. Laker bust D. mm Lis.  
Weight 2.22g. S2337E. N1797.  
GVF **(illustrated)** £450.00



19. Mary, 1553-54 Groat. Crowned bust.  
Tower Mint. mm Pomegranate.  
S2492. N1960. Bold GVF - Near EF  
**(illustrated)** £650.00



**HAMMERED SILVER (CONTINUED)**20. **1644 Charles I Exeter Groat.**

EXETER Mint, 1643-6. Mm Rose.  
1.68g. S3088. N3579.  
EF attractively toned, as struck and  
superb. Slightly irregular flan with  
striking crack. **(illustrated)** £1,500.00



## 21. Charles II Groat.

Third Hammered Issue, 1660-2.  
Mm Crown. 2.05g. S3324. N2768.  
About EF, pleasing £350.00

**MILLED SILVER****CROWNS**

22. 1662 First Bust, legend re-arranged no  
Rose Below. Edge Undated.  
Reverse Inverted. S3353.  
Near Very Fine for issue.  
**(illustrated)** £750.00



23. 1676 Charles II Crown. Third dr. bust.  
V. OCTAVO. Bull 397. ESC 51. S3358.  
Near VF for issue **(illus)** £450.00



24. 1678/7 Charles II Crown. Third dr. bust.  
TRICESIMO. S3358.  
Near VF, toned **(illustrated)** £850.00



25. 1679 Charles II Crown. T. PRIMO.  
Fourth dr. bust. S3359.  
Bold GF - Near VF, some marks on  
obverse. **(illustrated)** £495.00



26. 1680 Charles II Crown. T. SECVNDO.  
Fourth dr. bust. S3359. GF £275.00

**CROWNS (CONTINUED)**

27. **1687 James II Crown.** Second dr. bust. Crowned cruciform shields edge inscribed in raised letters. TERTIO. S3407. ESC 743 (78). Choice GEF, attractively toned with underlying mint brilliance. Weak on high points of obverse as usually found. A pleasing example. **(illustrated)** £4,500.00



28. 1794 George III Emergency Issue Dollar. Portrait type, oval countermark. Mexico City Mint. 8 Reales. S3765A. ESC 129. Bull 1852. Bold GVF, the countermark better. Attractively toned. **(illustrated)** £850.00



29. 1818 LIX. S3787. Almost Uncirculated, toned. **(illustrated)** £1,250.00



30. 1818 LVIII. George III. Laur. head. S3787. GEF attractively toned, two digs to right of bust and one or two marks on the reverse. £450.00
31. 1819 LX. S3787. EF, some minor marks £450.00
32. 1819 LIX. S3787. ESC 2010 (215). Choice Almost Unc, delightfully toned. **(illustrated)** £1,250.00



33. 1819 LIX. No Stops on Edge. S3787. ESC 215A (R3). GEF, cleaned and extremely rare **(illustrated)** £350.00



**CROWNS (CONTINUED)**

34. 1820 LX. S3787. ESC 216. Bull 2013.  
EF, toned. £450.00
35. 1820 LX. S3787. ESC 216. Bull 2013.  
EF, toned. £450.00
36. 1821 Secundo. George IV. Laur. head.  
S3805. ESC 2310 (246).  
EF, toned (**illustrated**) £550.00



37. **1821 George IV Crown**. Secundo.  
Laur. head. S3805. ESC 2310 (246).  
Choice Mint State, exceptional.  
The finest we have ever listed.  
Encapsulated by NGC as MS64  
(5979759-004)  
An exceptionally difficult grade to  
achieve. (**illustrated**) £4,000.00



38. 1821 Secundo. WWP Inverted Under Lance  
S3805. GVF, rare £325.00

39. 1887 JH. S3921. Choice Virtually Mint  
State, fields prooflike, couple of  
minor marks. (**illustrated**) £250.00



40. 1893 LVI. S3937. GEF, toned, some  
minor marks. £250.00
41. 1893 LVI. S3937. ESC 2593 (303).  
Choice Virtually BU, prooflike, some  
minor bag marks. £395.00
42. 1895 LIX. S3937. Choice Almost BU  
(**illustrated**) £495.00



43. 1896 LX. S3937. Almost BU, light  
attractive toning.  
(**illustrated**) £595.00



**CROWNS (CONTINUED)**

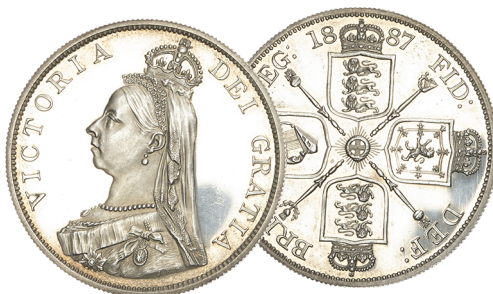
- |     |             |  |                  |
|-----|-------------|--|------------------|
| 44. | 1896        | LIX. S3937. EF   | £325.00          |
| 45. | 1897        | LXI. S3937. A/Unc, lustrous  | £375.00          |
| 46. | 1897        | LX. S3937. A/Unc lustrous, light steely tone.  | £375.00          |
| 47. | 1898        | LXII. S3937. Almost Unc, lustrous, some minor marks  | £450.00          |
| 48. | 1899        | LXIII. S3937. Almost Unc   | £395.00          |
| 49. | 1900        | LXIV. S3937. Near EF/EF  | £175.00          |
| 50. | 1927        | Proof Wreath Crown. S4036. As Struck   | £350.00          |
| 51. | 1928        | Wreath. S4036. Choice Almost BU, light golden tone.  | £450.00          |
| 52. | 1929        | Wreath. S4036. Near EF   | £250.00          |
| 53. | 1929        | Wreath. S4036. EF  | £295.00          |
| 54. | 1931        | Wreath. S4036. EF  | £325.00          |
| 55. | 1931        | Wreath. S4036. GEF or better   | £395.00          |
| 56. | 1933        | Wreath. S4036. Near EF, dark tone.   | £275.00          |
| 57. | 1933        | Wreath. S4036. EF  | £325.00          |
| 58. | <b>1935</b> | <b>George V Raised Edge Proof Crown.</b> S4050. Bull 3655. ESC 378. Superb As Struck<br><b>(illustrated)</b> | <b>£2,000.00</b> |



- |     |      |  |        |
|-----|------|--|--------|
| 59. | 1951 | Festival of Britain Crown. Bare head. George and dragon, date in exergue. Proof-like. Virtually BU in original purple box, slight old sticker mark on box. | £18.00 |
| 60. | 1953 | S4136. BU  | £8.00  |
| 61. | 1953 | Proof. S4136. Practically FDC  | £80.00 |
| 62. | 1965 | BU   | £2.50  |
| 63. | 1972 | BU   | £1.50  |
| 64. | 1977 | BU   | £1.50  |
| 65. | 1980 | BU   | £2.00  |
| 66. | 1981 | BU   | £2.00  |

**DOUBLE FLORINS**

- |     |             |   |                  |
|-----|-------------|---|------------------|
| 67. | 1887        | Arabic 1. S3923. GEF/Almost BU, toned<br><b>(illustrated)</b>                           | <b>£80.00</b>    |
| 68. | 1887        | Arabic 1. S3923. Choice Virtually BU  | £195.00          |
| 69. | <b>1887</b> | <b>Proof Double Florin.</b> Arabic 1. S3923. Pleasing As Struck<br><b>(illustrated)</b> | <b>£1,500.00</b> |



- |     |      |  |                |
|-----|------|--|----------------|
| 70. | 1887 | Roman I. S3922. GVF  | £75.00         |
| 71. | 1887 | Roman I. S3922. Choice Virtually BU, fields prooflike with a light golden tone. <b>(illustrated)</b> | <b>£225.00</b> |



- |     |      |  |         |
|-----|------|--|---------|
| 72. | 1889 | S3923. Almost BU                                     | £195.00 |
| 73. | 1889 | S3923. Choice Virtually Mint State, fields prooflike | £250.00 |

**HALFCROWNS**74. **1658 Oliver Cromwell Halfcrown.**

HIB type. S3227A. ESC 447. Bull 252.  
VF – GVF (**illustrated**) £2,750.00

75. **1658 Oliver Cromwell Halfcrown.**

HIB type. S3227A. ESC 447. Bull 252.  
GVF/Near EF, toned  
(**illustrated**) £3,800.00



## 76. 1672 3rd Bust. V. QUARTO. S3366.

ESC 471 (R). GF £195.00

## 77. 1677 Charles II. 4th Bust. V. NONO. S3367.

ESC 479. GF £175.00

78. **1686 James II Halfcrown.** SECVNDO edge.

First laur and dr. bust.  
S3408. Bull 749. ESC 494.  
GEF, lightly toned.  
Hair detail better than usual.  
(**illustrated**) £4,750.00



## 79. 1687/6 James II. 1st Bust. TERTIO. S3408.

Plain in angles. Overdate clear.  
Fine, rare £250.00

## 80. 1698 1st Bust. Modified Large Shields.

DECIMO. S3494. ESC 554.  
GVF, some marks £275.00

## 81. 1703 Queen Anne. VIGO below bust.

TERTIO. S3580. ESC 569. Bull 1358.  
Bold GF (**illustrated**) £200.00



## 82. 1707 Queen Anne. Plain in angles.

SEPTIMO. Post Union. S3604,  
Bull 1366, ESC 574. GVF  
(**illustrated**) £495.00



## 83. 1713 Plain in angles. DVODECIMO.

S3604. ESC 583.  
GVF, slight weight reduction on  
obverse. (**illustrated**) £550.00



**HALFCROWNS (CONTINUED)**

84. 1714/3 Roses & Plumes in angles. D. TERTIO. S3607. Very Fine £450.00
85. **1717 George I Halfcrown.**  
Roses & Plumes in angles. TIRTIO. S3642. ESC 1554. Bull 589. Near EF/EF, attractively toned. **(illustrated)** £1,950.00



86. **1723 George I Halfcrown.** SSC in angles. DECIMO. ESC 1557 (592). S3643. 7 strings to harp. GEF, attractively toned. **(illustrated)** £3,500.00



87. 1732 Roses & Plumes in angles. SEXTO. S3692. ESC 596. GVF, rare **(illustrated)** £750.00



88. 1739 George II. Roses in angles. DVODECIMO. S3693. ESC 600. Bull 1679. Near VF £350.00
89. 1741 George II. Roses in angles. D. QVARTO. S3693. ESC 601 (R3). Bull 1681. GVF, some marks in obverse field. **(illustrated)** £750.00



90. **1741/39 George II Halfcrown.**  
Roses in angles. D. QVARTO. S3693. Extremely Fine, attractively toned. **(illustrated)** £1,500.00



91. 1745 George II. LIMA below bust. D. NONO. S3695. ESC 605. GVF or better, toned **(illustrated)** £550.00



**HALFCROWNS (CONTINUED)**

92. 1746 George II. LIMA below bust. D.NONO. S3695A. ESC 606. GF, the reverse better than VF. £250.00
93. 1746/5 LIMA below bust. D.NONO. S3695A. Near Extremely Fine, attractively toned. **(illustrated)** £850.00



94. 1816 George III. S3788. ESC 613. Bull 2086. Almost BU, darkly toned. **(illustrated)** £575.00



95. 1817 George III. Small Head. S3789. ESC 618. GEF, toned £375.00
96. 1817 George III. Large Head. S3788. ESC 616. GEF £395.00
97. 1817 George III. Large Head. S3788. ESC 616. Almost BU £550.00
98. 1817 George III. Large Head. S3788. ESC 616. Choice Virtually Mint State, some golden hints on obverse. **(illustrated)** £650.00



99. 1817 Large Head. S/1 in PENSE. S3788. Choice Almost BU and extremely rare. **(illustrated)** £950.00



100. 1818 George III. S3789. ESC 621. GEF £395.00
101. 1819 George III. S3789. ESC 623. EF, cleaned £150.00
102. 1819/8 George III. S3789. Bull 2103. Fine, a little porous. Very rare £95.00
103. 1820 George III. S3807. ESC 628. Choice Virtually BU, light mauve tone. **(illustrated)** £650.00



104. **1824 George IV Bare Head Proof 2/6.** Plain Edge. S3809. ESC 639B. Bull 2836 R4. Davies 190. As Struck, delightful olivey tone. Extremely rare. We can only find 2 examples sold at auction in the last 20 years. Encapsulated by NGC as PF63 (6383210-007) **(illus)** £12,500.00



**HALFCROWNS (CONTINUED)**

105. 1825 Bare Head. George IV. S3809.  
ESC 642. Near EF (**illus**) £150.00



106. 1825 Bare Head. George IV. S3809.  
ESC 642. Virtually BU  
(**illustrated**) £650.00



107. **1826 George IV Proof Halfcrown.**  
Bare Head. S3809. ESC 647. Bull 2376  
As Struck, minutest of hairlines.  
(**illustrated**) £2,500.00



108. 1834 WW in script. S3834. ESC 662.  
Bull 2478. Near EF, cleaned £150.00

109. 1834 William IV. WW in script. S3834.  
ESC 662. Bull 2478.  
Almost BU, light tone, light flaw on  
truncation. (**illustrated**) £695.00



110. 1834 William IV. WW in block capitals.  
S3834A. ESC 660 (R). Near VF £150.00  
111. 1836/5 William IV. S3834. ESC 666A (R3).  
GVF, very rare £175.00  
112. **1839 Victoria Plain Edge Proof Halfcrown.**  
S3885. ESC 670.  
One ornate and one plain fillet.  
As Struck, delightfully toned, trivial  
hairlines.  
Encapsulated by CGS as 78  
(**illustrated**) £5,950.00



113. 1840 S3887. GF (**illustrated**) £70.00



114. 1845/3 S3888. GEF, cleaned. £450.00  
115. 1877 S3889. Near EF, cleaned £95.00  
116. 1880 S3889. Near EF £250.00

**HALFCROWNS (CONTINUED)**

117. 1880 S3889. GEF, light golden tone £350.00

118. 1880 S3889. Choice Virtually Mint State, couple of nicks on edge. (illustrated) £550.00



119. 1881 S3889. Near EF, toned (illustrated) £95.00



120. 1883 S3889. GEF, light golden tone £300.00

121. 1885 S3889. EF £275.00

122. 1885 S3889. Almost BU, lustrous light golden tone. Surface marks visible under close inspection. £450.00

123. 1885 Victoria. S3889. Choice Almost Mint State, light golden tone with underlying brilliance. (illustrated) £550.00



124. 1886 S3889. Almost Uncirculated lustre £425.00

125. 1887 YH. S3889. GEF, some marks £295.00

126. 1888 S3924. GVF (illustrated) £50.00



127. 1889 S3924. GEF (illustrated) £95.00



128. 1890 S3924. Near EF (illustrated) £75.00



129. 1891 S3924. Virtually BU £295.00

130. 1893 S3938. Almost BU £150.00

131. 1893 Proof Victoria Halfcrown. S3938. ESC 727. As Struck, attractively toned, some scratches on obverse. £450.00

132. 1894 S3938. Virtually BU, couple of toning spots £295.00

133. 1894 S3938. Virtually BU £350.00

134. 1895 S3938. Almost BU £225.00

135. 1896 S3938. Virtually BU £250.00

136. 1897 S3938. Choice Virtually BU £195.00

137. 1897 S3938. Choice Virtually Mint State, fields prooflike, delightful gold mauve toning. £225.00

**HALFCROWNS (CONTINUED)**

138. 1898 S3938. Almost BU, light gold tone £225.00  
 139. 1900 S3938. Virtually BU £175.00  
 140. 1900 S3938. Virtually BU, exquisite blue/gold toning on obverse. £175.00  
 141. 1901 S3938. About Unc, toned. £145.00  
 142. 1901 S3938. Almost BU, delightfully toned. £150.00  
 143. 1901 S3938. Choice Virtually BU, attractive tone. £195.00  
 144. 1901 S3938. Choice Virtually BU £195.00  
 145. 1902 Edward VII. S3980. Choice Practically Mint State £250.00  
 146. 1903 Edward VII. S3980. GVF, some marks (illustrated) £550.00



147. 1906 Edward VII. S3980. GEF, the reverse better £200.00  
 148. 1906 Edward VII. S3980. Choice Practically Mint State, delightful mauve toning. (illustrated) £695.00



149. 1907 Edward VII. S3980. Choice Almost Uncirculated, toned. (illustrated) £550.00



150. 1908 Edward VII. S3980. Near EF £225.00  
 151. 1909 Edward VII. S3980. Choice Virtually Mint State, exquisite light mauve toning. (illustrated) £650.00



152. 1910 Edward VII. S3980. Almost BU £375.00  
 153. 1910 Edward VII. S3980. Virtually BU, attractively toned. £450.00  
 154. 1910 Edward VII. S3980. Virtually BU £450.00  
 155. 1913 George V. S4011. Virtually BU, small scrape on N of IND. £250.00  
 156. 1914 George V. S4011. Virtually BU, lightly toned. £150.00  
 157. 1915 S4011. GEF/Almost BU (illustrated) £55.00





**HALFCROWNS (CONTINUED)**

168. 1939 George VI. S4080. Virtually BU  
(illustrated) £35.00



169. 1940 George VI. S4080. Almost BU  
(illustrated) £25.00



170. 1941 George VI. S4080. Virtually BU  
(illustrated) £25.00



171. 1948 S4101. Almost BU £6.00  
 172. 1949 S4106. GEF £8.00  
 173. 1950 GEF £8.00  
 174. 1965 Almost BU £3.50  
 175. 1965 Elizabeth II. S4145. BU £5.00  
 176. 1967 Elizabeth II. S4145. BU £3.00

**FLORINS**

177. **1849 Godless Florin.** S3890. Bull 2815.  
 WW behind bust within linear circle.  
 Choice Mint State, fields prooflike.  
 Encapsulated by NGC as MS63  
 (6768357-010)  
 (illustrated) £1,450.00



178. 1854 Key Date Gothic Florin. S3891.  
 Fine, mark in field.  
 (illustrated) £850.00



179. 1856 Gothic Florin. S3891. GVF  
 (illustrated) £150.00



180. 1859 Gothic Florin. S3891. GEF  
 (illustrated) £375.00



**FLORINS (CONTINUED)**

181. 1866 Gothic Florin. S3892. Die Number 19.  
GVF **(illustrated)** £150.00



182. 1869 Gothic Florin. S3893. Die Number 19.  
GEF, bright with some scratches and  
marks. **(illustrated)** £150.00



183. 1871 Gothic Florin. S3893. Die Number 8.  
EF, some minor marks  
**(illustrated)** £300.00



184. 1879 Gothic Florin. S3898.  
ESC 2895 (852) R.  
39 arcs and 38 trefoils (8 below bust).  
No Die Number. No WW.  
EF, toned, rare. **(illustrated)** £300.00



185. 1880 Gothic Florin. S3900. GEF  
**(illustrated)** £450.00



186. 1891 Key Date. S3925. Fine  
**(illustrated)** £30.00



187. 1893 S3939. Choice Virtually BU  
**(illustrated)** £175.00



188. 1894 S3939. Almost BU, delightfully  
toned. **(illustrated)** £250.00



**FLORINS (CONTINUED)**

189. 1895 S3939. Choice Virtually Mint State, delightfully toned. (illustrated) £245.00



190. 1897 S3939. GEF/Almost BU (illustrated) £75.00



191. 1898 S3939. GEF (illustrated) £100.00



192. 1900 S3939. Almost BU, couple of minor marks £150.00

193. 1900 S3939. Choice Practically Mint State £195.00

194. 1901 S3939. GEF (illustrated) £75.00



195. 1901 S3939. Choice Virtually BU £175.00

196. 1902 Edward VII. S3981. Choice Virtually BU (illustrated) £150.00



197. 1903 Edward VII. S3981. BU, lightly brushed. £150.00

198. 1903 Edward VII. S3981. Almost BU (illustrated) £395.00



199. 1905 Key Date Edward VII Florin. S3981. Near VF, cleaned and scratched. (illustrated) £75.00



200. 1905 Key Date Edward VII Florin. S3981. Choice Almost Uncirculated (illustrated) £1,500.00



**FLORINS (CONTINUED)**

201. 1906 Edward VII. S3981. EF £150.00

202. 1906 Edward VII. S3981. EF (illus) £150.00



203. 1908 Edward VII. S3981. EF, patchy tone on obverse.

(illustrated)

£250.00



204. 1908 Edward VII. S3981. GEF £395.00

205. 1909 Edward VII. S3981. Near EF £200.00

206. 1911 S4012. GEF/Almost BU (illus) £95.00



207. 1911 George V Proof Florin. S4012.

As Struck, delightfully toned.

Encapsulated by CGS as Proof 90

£200.00

208. 1912 S4012. EF/GEF, some minor marks

(illustrated)

£80.00



209. 1913 S4012. EF/GEF, some minor marks, rare (illustrated)

£95.00



210. 1914 S4012. EF (illustrated)

£40.00



211. 1915 S4012. GEF (illustrated)

£95.00



212. 1916 S4012. Almost BU (illus)

£80.00



213. 1916 S4012. Almost BU (illus)

£80.00



**FLORINS (CONTINUED)**

214. 1916 S4012. Virtually BU  
(**illustrated**) £95.00



215. 1918 S4012. GEF/Almost BU, light  
golden tone. (**illustrated**) £70.00



216. 1922 S4022A. Near EF £30.00  
217. 1925 S4022A. EF/GEF £300.00  
218. 1927 George V Proof. S4038.  
As Struck £150.00  
219. 1927 George V Proof. S4038.  
As Struck (**illustrated**) £150.00



220. 1937 Proof. S4081. FDC £35.00  
221. 1945 S4081. GEF £8.00  
222. 1953 Proof. S4138. FDC, lightly toning  
from the box on obverse. £30.00  
223. 1953 Proof. S4138. FDC £40.00  
224. 1965 Virtually BU £1.50  
225. 1965 BU £3.00  
226. 1967 BU £1.25

**SHILLINGS**

227. 1697 William III. First bust. S3497.  
ESC 1091. Near EF, reverse better  
£295.00  
228. 1700 William III. Fifth bust. S3516.  
ESC 1121. Tall O's in date.  
EF or better with brilliance.  
(**illustrated**) £400.00



229. 1700 William III. Fifth bust. S3516.  
ESC 1121. Regular O's in date.  
Choice GEF and About As Struck,  
delightfully toned with underlying  
brilliance. £750.00  
230. 1703 Queen Anne. VIGO below.  
Second bust. S3586. ESC 1131.  
Bull 1388. Near EF, at some point  
cleaned. (**illustrated**) £550.00



231. 1709 Queen Anne. Plain in Angles.  
Third bust. S3610. ESC 1154.  
GVF or better £250.00  
232. 1711 Queen Anne. Plain in Angles.  
Fourth bust. S3618. ESC 1158.  
GVF or better £225.00  
233. 1723 George I. 1st Bust. SSC in angles.  
S3647. ESC 1176.  
EF or better, lustrous £350.00  
234. 1731 George II. Young Head.  
Roses & Plumes in angles. S3698.  
ESC 1194. Near VF £225.00  
235. 1735 George II. Young Head.  
Roses & Plumes in angles. S3700.  
ESC 1198. Fine, toned £95.00

**SHILLINGS (CONTINUED)**

236. 1739 George II. Young Head.  
Roses in angles. S3701. ESC 1201.  
VF/GVF, bright £150.00
237. 1741 George II. Young Head.  
Roses in angles. S3701. ESC 1202.  
GVF - Near EF, toned £375.00
238. 1745 George II. Old Head. Roses in angles.  
S3702. ESC 1204.  
Near VF, weak on obverse. £125.00
239. 1750 George II. Old Head. Plain in angles.  
Thin 0 in date. S3704. ESC 1210.  
VF £145.00
240. 1750/46 George II. Old Head.  
Plain in angles. S3704.  
Near VF £115.00
241. 1816 S3790. Almost BU £150.00
242. 1816 S3790. Almost BU, light golden  
tone £150.00
243. 1816 S3790. Choice Virtually BU £175.00
244. 1817 George III. Laur head. S3790.  
GVF £50.00
245. 1817 George III. Laur head. S3790.  
GVF, darkly toned. £50.00
246. 1817 George III. Laur head. S3790.  
Near EF, toned £70.00
247. 1817 George III. Laur head. S3790.  
Choice Virtually BU, lustrous £195.00
248. 1817 George III. Laur head. S3790.  
Virtually BU, attractively toned.  
£195.00
249. 1817 George III. Laur head. S3790.  
Choice Mint State £225.00
250. 1819 S3790. Near VF £35.00
251. 1819 S3790. EF, toned £90.00
252. 1820 S3790. EF £90.00
253. 1820 S3790. GEF, some flaws on  
obverse £95.00
254. 1825 George IV. Bare Head. S3812.  
Bull 2405. ESC 1254.  
Almost BU, some marks and  
hairlines. £225.00
255. 1825 George IV. Bare Head. S3812.  
Bull 2405. ESC 1254.  
Almost BU, toned. £395.00
256. 1825 George IV. Bare Head. S3812.  
Bull 2405. ESC 1254.  
Almost BU £425.00

257. 1825 George IV. Bare Head.  
Roman I in date. S3812. GF £150.00
258. 1826 George IV. S3812. Near Fine £12.00
259. 1826 George IV. S3812. Near VF £40.00
260. 1826 George IV. S3812. Near EF/EF £80.00
261. 1826 George IV. S3812. EF, toned £95.00
262. 1826 George IV. S3812. Almost BU £325.00
263. 1829 S3812. GF £45.00
264. 1829 S3812. Near VF £75.00
265. 1835 William III. S3835.  
GVF/Near EF (**illustrated**) £95.00



266. 1839 Proof. WW on truncation.  
Reverse upright. S3903.  
As Struck, lightly brushed/cleaned.  
(**illustrated**) £750.00



267. 1840 S3904. GF, rare £60.00
268. 1842 S3904. Choice Virtually Mint State  
(**illustrated**) £550.00



269. 1844 S3904. GVF or better, cleaned. £45.00
270. 1845 S3904. GEF, lightly brushed. £150.00

**SHILLINGS (CONTINUED)**

271. 1845 S3904. Almost BU, rare  
(illustrated) £525.00



272. 1846 S3904. EF, toned. £175.00  
273. 1849 S3904. Near EF, bright, rare  
(illustrated) £150.00



274. 1853 S3904. Near EF, toned £95.00  
275. 1853 S3904. Near EF/EF, toned. £150.00  
276. 1855 S3904. Near EF £150.00  
277. 1855 S3904. GEF/Almost BU, toned.  
£250.00  
278. 1856 S3904. Near EF/EF £110.00  
279. 1856 S3904. Almost Unc, lustrous £275.00  
280. 1856 S3904. Choice Virtually BU £395.00  
281. 1858 S3904. Near EF £150.00  
282. 1858 S3904. Choice Virtually BU £395.00  
283. 1859 S3904. GEF, cleaned £100.00  
284. 1859 S3904. Choice Virtually BU £450.00  
285. 1859/8 S3904. GVF £125.00  
286. 1860 S3904. Virtually BU, light steely  
tone. £450.00  
287. 1861 S3904. GVF+/Near EF £75.00  
288. 1861 S3904. Almost BU £395.00  
289. 1862 S3904. GEF, rare  
(illustrated) £495.00



290. 1864 S3905. Die Number 7.  
Almost BU, lustrous £395.00  
291. 1864 S3905. Die Number 6.  
Almost BU, light golden tone. £395.00  
292. 1865 S3905. Die Number 99.  
EF/GEF £195.00  
293. 1865 S3905. Die Number 41. GEF £225.00  
294. 1865 S3905. Die Number 77.  
GEF/Almost BU, couple of minor  
marks. £250.00  
295. 1865 S3905. Die Number 70.  
Almost BU £325.00  
296. 1866 S3905. Die Number 48.  
Almost BU £300.00  
297. 1866 S3905. Die Number 58.  
Virtually BU £350.00  
298. 1866 Die Number 44. S3905.  
Choice Practically Mint State £395.00  
299. 1867 S3905. Die Number 32. GVF £65.00  
300. 1868 S3906A. Die Number 43.  
GEF/Almost BU £200.00  
301. 1868 S3906A. Die Number 34.  
Almost BU £350.00  
302. 1870 S3906A. Die Number 1.  
GEF/Almost BU £225.00  
303. 1871 S3906A. Die Number 37.  
GEF/Almost BU, toned £225.00  
304. 1871 S3906A. Die Number 12.  
Almost BU £350.00  
305. 1872 S3906A. Die Number 70.  
Almost BU £295.00  
306. 1872 S3906A. Die Number 37.  
Virtually BU £350.00  
307. 1873 S3906A. Die Number 42.  
Almost BU, very bright £100.00  
308. 1874 S3906A. Die Number 9.  
Almost BU £295.00  
309. 1875 S3906A. Die Number 6.  
GEF, cleaned £50.00  
310. 1877 S3906A. Die Number 3. GEF £150.00  
311. 1878 S3906A. Die Number 7.  
GEF, lightly cleaned. £75.00  
312. 1879 S3907. No Die Number. EF £100.00  
313. 1879 S3907. No Die Number.  
Almost BU £295.00  
314. 1880 S3907. Almost BU £245.00  
315. 1881 S3907. Virtually BU £225.00  
316. 1882 S3907. Near EF, cross scratched in  
obverse field. £60.00

**SHILLINGS (CONTINUED)**

317.	1883	S3907. Near EF, lightly toned.	£95.00	351.	1900	S3940A. GEF, toned	£50.00
318.	1883	S3907. Near EF	£95.00	352.	1900	S3940A. Virtually BU, attractively toned.	£95.00
319.	1883	S3907. Almost BU	£250.00	353.	1901	S3940A. GEF	£50.00
320.	1884	S3907. EF	£95.00	354.	1901	S3940A. Choice Virtually BU	£95.00
321.	1884	S3907. Almost BU	£225.00	355.	1902	Edward VII. S3982. Choice GEF or better	£75.00
322.	1885	S3907. GEF, some minor marks.	£95.00	356.	1902	Edward VII. S3982. Almost BU	£95.00
323.	1885	S3907. Almost BU	£195.00	357.	1902	Edward VII. S3982. Almost BU	£95.00
324.	1885	S3907. Choice Virtually BU	£250.00	358.	1902	Edward VII. S3982. Choice Mint State, exquisite olive toning.	£140.00
325.	1886	S3907. Near EF, toned.	£75.00	359.	1903	Edward VII. S3982. Almost BU	£375.00
326.	1887	JH. Rev. C. S3926. GEF, light gold tone.	£25.00	360.	1904	Edward VII. S3982. Near EF/EF toned	£125.00
327.	1887	JH. Rev. C. S3926. Choice Virtually BU, exquisite purple toning.	£50.00	361.	1904	Edward VII. S3982. Almost BU, toned.	£375.00
328.	1887	JH. Rev. C. S3926. Virtually BU, lustrous	£50.00	362.	1906	Edward VII. S3982. Almost BU, light golden tone.	£125.00
329.	1888	S3926. Not 8/7. GEF toned, extremely rare	£175.00	363.	1906	Edward VII. S3982. Almost BU	£125.00
330.	1888/7	S3926. GEF	£55.00	364.	1906	Edward VII. S3982. Almost BU	£125.00
331.	1889	LH. S3927. Almost BU	£85.00	365.	1906	Edward VII. S3982. Virtually Mint State, light gold toning.	£175.00
332.	1889	LH. S3927. Virtually BU	£90.00	366.	1907	Edward VII. S3982. Almost BU	£195.00
333.	1889	LH. S3927. Choice BU	£125.00	367.	1907	Edward VII. S3982. Almost BU	£195.00
334.	1889	SH. S3926. ESC 1354. Near EF, extremely rare	£275.00	368.	1909	Edward VII. S3982. Choice Virtually BU	£450.00
335.	1890	S3927. GEF	£70.00	369.	1909	Edward VII. S3982. Choice Mint State <b>(illustrated)</b>	£550.00
336.	1890	S3927. Choice Virtually BU	£115.00				
337.	1890	S3927. Choice BU	£150.00				
338.	1890	S3927. Choice BU	£150.00				
339.	1891	S3927. Virtually Mint State	£175.00				
340.	1892	S3927. Almost BU	£145.00				
341.	1892	S3927. Choice Virtually BU	£195.00				
342.	1893	Old Head. ESC 1361. S3940. Almost BU	£75.00				
343.	1893	Old Head. ESC 1361A. Smaller Lettering on Obverse. S3940. Choice Virtually BU	£95.00				
344.	1896	ESC 1365. S3940A. Larger Rose. GEF	£60.00				
345.	1896	ESC 1365. S3940A. Larger Rose. Almost BU	£125.00				
346.	1896	ESC 1365. S3940A. Larger Rose. Almost BU	£125.00				
347.	1897	S3940A. Choice BU	£150.00				
348.	1898	S3940A. Virtually BU	£150.00				
349.	1899	S3940A. Virtually BU, light scratch in obverse field.	£65.00				
350.	1899	S3940A. GEF	£75.00				



370.	1910	Edward VII. S3982. EF	£75.00
371.	1910	Edward VII. S3982. EF	£75.00
372.	1910	Edward VII. S3982. Virtually BU	£150.00
373.	1911	S4013. GEF	£40.00
374.	1911	S4013. Almost BU	£65.00

**SHILLINGS (CONTINUED)**

375.	1911	S4013. Almost BU	£65.00
376.	1913	S4013. EF, toned	£75.00
377.	1914	S4013. BU, lightly toned.	£90.00
378.	1914	S4013. Choice BU with brilliance	£90.00
379.	1915	S4013. Virtually BU	£75.00
380.	1916	S4013. Almost BU	£65.00
381.	1916	S4013. Choice BU, light attractive toning.	£95.00
382.	1919	S4013. Virtually BU	£85.00
383.	1919	S4013. Virtually BU	£85.00
384.	1920	S4023. GEF	£75.00
385.	1922	S4023A. Almost BU, toned.	£95.00
386.	1923	S4023A. Choice Virtually BU, lustrous	£95.00
387.	1923	S4023A. Choice Virtually BU, attractively toned.	£95.00
388.	1924	S4023A. Almost BU, a couple of minor marks	£95.00
389.	1924	S4023A. Choice Virtually BU	£110.00
390.	1925	S4023A. Choice Virtually BU	£150.00
391.	1926	Modified effigy. S4033. Almost BU	£50.00
392.	1927	2nd Issue. S4039. Almost BU	£70.00
393.	1928	S4039. Virtually BU	£35.00
394.	1933	S4039. Almost BU	£45.00
395.	1934	S4039. Almost BU	£50.00
396.	1935	S4039. Virtually BU	£45.00
397.	1937S	Proof. S4083. FDC	£35.00
398.	1944E	Almost BU	£15.00
399.	1946E	Virtually BU	£12.00
400.	1948S	Almost BU	£8.00
401.	1949S	Almost BU	£20.00
402.	1953E	BU	£6.00
403.	1953E	Proof. S4139. FDC	£20.00
404.	1953E	Proof. S4139. FDC	£20.00
405.	1953S	BU	£6.00
406.	1953S	Proof. S4140. FDC	£20.00
407.	1959S	VF	£1.00
408.	1959S	GVF	£2.00
409.	1959S	S4148. EF/GEF	£20.00
410.	1965E	BU	£2.00
411.	1966E	BU	£2.00
412.	1966S	BU	£2.00

**SIXPENCES**

413. 1696 William III. y below (YORK).  
Early harp, 1st bust. Large Crowns.  
S3525. ESC 1539.  
GEF, pleasing (**illustrated**) £395.00



414. 1697 William III. Later harp, 3rd bust.  
Large Crowns. S3538. ESC 1566.  
Near VF £55.00
415. 1745/3 George II. Roses in angles.  
S3709. ESC 1616 (R2).  
GVF or better £195.00
416. 1746 George II. LIMA below bust.  
Angles plain. S3710A. ESC 1618.  
Near VF £75.00
417. 1750 George II. Angles plain. S3711.  
ESC 1620. Near VF £60.00
418. 1757 George II. Angles plain. S3711.  
ESC 1622. GVF or better £75.00
419. 1758/7 George II. Angles plain. S3711.  
ESC 1624. GEF £175.00
420. 1787 With Hearts. S3749. GVF+ £75.00
421. 1787 No Hearts. S3748. GVF+ £75.00
422. 1790 Pattern Sixpence by Droz. ESC 2219.  
GEF, toned. (**illustrated**) £595.00



423. 1816 S3791. Choice Virtually BU,  
attractive tone with underlying  
brilliance. £150.00
424. 1817 S3791. GEF, light toning. Obverse  
hairlines visible only on close  
inspection. £50.00
425. 1819 Small 8 in date. S3791.  
EF, toned. £75.00
426. 1820 S3791. Choice Virtually BU £150.00
427. 1820 1 of date inverted. S3791. Bull 2208.  
ESC 1639A R4. GF - Near VF £150.00

**SIXPENCES (CONTINUED)**

428. 1824 George IV. Laur. head. S3814.  
Almost BU, attractive tone, some  
minor marks. £275.00
429. 1825 George IV. Laur. head. S3814.  
Near EF, dig on cheek. £75.00
430. 1826 George IV. Bare head. S3815.  
ESC 1662. GEF/Almost BU £195.00
431. 1828 S3815. GEF toned, a dig and some  
scratches in field. £150.00
432. 1829 S3815. GF, toned £30.00
433. 1831 S3836. GEF, ever so lightly  
brushed. £75.00
434. 1834 S3836. GEF, attractively toned.  
£175.00
435. 1834 S3836. Almost BU £275.00
436. 1835 S3836. GEF or better, toned. £250.00
437. 1835 S3836. Choice Mint State,  
attractively toned.  
Encapsulated by NGC as MS63  
(6381344-023) £395.00
438. 1835 S3836. Choice Mint State,  
exquisitely toned. (**illus**) £395.00



439. 1836 S3836. Near EF, cleaned. £150.00
440. 1837 S3836. EF, some minor marks.  
£295.00
441. 1839 S3908. GVF, bright £45.00
442. 1839 S3908. Almost BU, toned £275.00
443. 1844 Large 44. S3908. Near EF £95.00
444. 1844 Small 44. S3908.  
Almost Unc, toned. £250.00
445. 1845 S3908. A/Unc, cleaned. £95.00
446. 1846 S3908. GEF £150.00
447. 1851 S3908. Almost BU, light attractive  
tone. £250.00
448. 1851 S3908. Choice Virtually Mint State  
(**illustrated**) £350.00



449. 1852 S3908. Choice Virtually Mint State,  
exquisite blue green toning.  
(**illustrated**) £395.00



450. 1853 S3908. EF, bright £125.00
451. 1853 S3908. Choice Practically Mint  
State, fields prooflike  
(**illustrated**) £375.00



452. 1855 S3908. GVF/Near EF a little  
porous. £30.00
453. 1856 S3908. GVF or better £70.00
454. 1858 S3908. GEF, toned £175.00
455. 1863 S3908. Fine only, rare £75.00
456. 1864 S3908. Die Number 11.  
Near EF, brushed. £60.00
457. 1866 S3908. Die Number 3.  
A/Unc toned. £225.00
458. 1867 S3910. Die Number 13.  
Near EF, once cleaned now  
retoning. £125.00
459. 1871 S3911. No Die Number.  
Almost BU, lightly brushed. £125.00
460. 1871 S3910. Die Number 28.  
Almost BU £225.00
461. 1873 S3910. Die Number 13.  
GEF, toned. £95.00
462. 1874 S3910. Die Number 21.  
Almost BU £225.00
463. 1875 S3910. Die Number 2.  
Almost BU, light gold tone. £245.00
464. 1877 S3910. Die Number 2.  
EF, toned £95.00
465. 1877 S3911. No Die Number.  
GEF, attractively toned. £150.00
466. 1880 S3912. EF, toned £95.00
467. 1881 S3912. Almost BU £150.00

**SIXPENCES (CONTINUED)**

468.	1883	S3912. Virtually BU, golden tone.	£195.00
469.	1884	S3912. Choice Virtually BU	£195.00
470.	1885	S3912. Almost BU, attractively toned.	£175.00
471.	1886	S3912. Almost BU, attractively toned.	£150.00
472.	1886	S3912. Virtually BU, delightfully toned.	£195.00
473.	1887	JH. Withdrawn. R/V in VICTORIA. S3928. Choice Virtually BU, exquisitely toned.	£200.00
474.	1887	YH. S3912. GEF	£75.00
475.	1887	YH. S3912. Virtually BU attractively toned.	£140.00
476.	1891	S3929. Virtually BU	£95.00
477.	1892	S3929. Virtually BU	£95.00
478.	1893	OH. S3941. BU	£100.00
479.	1894	S3941. EF	£50.00
480.	1896	S3941. GEF	£50.00
481.	1898	S3941. GEF, toned.	£50.00
482.	1901	S3941. Old veiled bust. Almost BU	£60.00
483.	1910	Edward VII. S3983. Bare head. GEF toned	£55.00
484.	1926	ME. S4034. Virtually BU	£50.00
485.	1926	ME. S4034. BU, exquisitely toned.	£85.00
486.	1936	S4041. GEF	£10.00
487.	1936	S4041. Almost BU	£16.00
488.	1936	S4041. Virtually BU	£20.00
489.	1953	BU	£6.00
490.	1953	Proof. S4141. FDC	£20.00
491.	1953	Proof. S4141. FDC	£20.00
492.	1956	BU	£12.00
493.	1959	BU	£8.00
494.	1965	BU	£2.00
495.	1967	BU	£1.00

**SILVER THREEPENCES**

496.	1893	OH. S3942. Virtually BU, toned	£50.00
497.	1897	EF	£16.00
498.	1900	S3942. Almost BU	£40.00
499.	1901	S3942. Almost BU, toned	£35.00
500.	1901	S3942. Almost BU, toned	£35.00
501.	1902	S3984. GEF	£15.00
502.	1908	S3984. Fine	£1.25

503.	1908	S3984. Almost BU, toned, slight nick on edge.	£30.00
504.	1937	S4085. BU	£12.00
505.	1940	S4085. BU	£25.00
506.	1942	S4085. BU	£45.00

**GROATS**

507.	1836	William III. S3837. GEF, toned	£85.00
508.	1836	William III. S3837. GEF/Almost BU	£110.00
509.	1837	William III. S3837. GEF	£95.00
510.	1839	S3913. GEF/Almost BU	£95.00

**BRASS THREEPENCES**

511.	1937	Proof. FDC, lightly toned	£20.00
512.	1946	Fine, rare	£6.00
513.	1946	GF, rare	£8.00
514.	1953	BU Full Lustre	£4.00
515.	1953	Proof. FDC, lightly toning.	£15.00
516.	1965	BU Full Lustre	£4.00
517.	1967	BU Full Lustre	£2.00
518.	1970	Proof. FDC	£5.00

**MAUNDY ODDMENTS**

519.	4d	1835 William IV. S3841. As Struck	£75.00
520.	4d	1904 Edward VII. S3986. Unc, toned	£45.00
521.	4d	1905 Edward VII. S3986. Unc, toned	£30.00
522.	4d	1935 George V. S4044. As Struck, toned.	£35.00
523.	2d	1904 Edward VII. S3988. Unc, toned	£40.00
524.	2d	1905 Edward VII. S3988. As Struck, toned	£35.00
525.	2d	1911 George V. S4019. As Struck, delightfully toned.	£40.00
526.	2d	1922 George V. S4030. As Struck	£40.00
527.	2d	1968 Elizabeth II. S4134. As Struck	£40.00
528.	1d	1792 George III. S3760. 'Wire Money' GEF	£95.00
529.	1d	1800 George III. S3761. GEF	£65.00
530.	1d	1820 George III. S3796. As Struck, toned.	£75.00

**MAUNDY SETS**

531. 1800 George III Maundy Set. S3764.  
About As Struck, toned and pleasing  
in modern red case.  
**(illustrated)** £350.00



532. 1885 Victoria Maundy Set. S3916.  
FDC in modern red case.  
**(illustrated)** £250.00



533. 1896 Victoria Maundy Set. S3943.  
FDC, delightfully toned in modern red  
case. **(illustrated)** £195.00



534. 1898 Victoria Maundy Set. S3943.  
FDC, delightfully toned in modern red  
case. **(illustrated)** £195.00



535. 1900 Victoria Maundy Set. S3943.  
Almost FDC in modern red case.  
**(illustrated)** £150.00



536. 1900 Victoria Maundy Set. S3943.  
FDC, delightful light tone in modern  
red case. **(illustrated)** £195.00



537. 1902 Edward VII Maundy Set. S3985.  
Almost FDC in modern red case.  
**(illustrated)** £125.00



538. 1903 Edward VII Maundy Set. S3985.  
FDC, attractively toned in modern  
red case. **(illustrated)** £225.00



**MAUNDY SETS (CONTINUED)**

539. 1903 Edward VII Maundy Set. S3985.  
FDC, toned. Original dated black  
wooden case, missing a hinge but  
still closes. **(illustrated)** £250.00



540. 1904 Edward VII Maundy Set. S3985.  
FDC, light attractive tone in modern  
red case. **(illustrated)** £175.00



541. 1905 Edward VII Maundy Set. S3985.  
FDC in modern red case.  
**(illustrated)** £195.00



542. 1906 Edward VII Maundy Set. S3985.  
Almost FDC, toned in modern red  
case. **(illustrated)** £125.00



543. 1907 Edward VII Maundy Set. S3985.  
FDC, light golden tone in modern  
red case. **(illustrated)** £195.00



544. 1907 Edward VII Maundy Set. S3985.  
FDC, attractively toned in modern  
red case. **(illustrated)** £195.00



545. 1908 Edward VII Maundy Set. S3985.  
FDC, light golden tone in modern  
red case. **(illustrated)** £195.00



546. 1910 Edward VII Maundy Set. S3985.  
FDC with original red undated  
wooden case. **(illustrated)** £250.00



**MAUNDY SETS (CONTINUED)**

547. 1931 George V Maundy Set. S4043.  
FDC in modern red case.

**(illustrated)**

£175.00



548. 1937 George VI Maundy Set. S4086.  
FDC in modern red case.

**(illustrated)**

£175.00



549. 1964 Elizabeth II Maundy Set.  
Westminster Abbey. S4131.  
FDC in modern red case.

**(illustrated)**

£175.00



550. 1973 Elizabeth II Maundy Set.  
Westminster Abbey.  
FDC in modern red case.

**(illustrated)**

£175.00



551. 1982 Elizabeth II Maundy Set.  
St. Davids Cathedral.  
FDC in modern red case.

**(illustrated)**

£175.00

**PENNIES**

552. 1806 Copper Proof Penny. BMC 1329.  
Superb As Struck with some  
original red lustre on both sides.  
Encapsulated by NGC as PF 64 BN  
(6319316-002)

Ex The Coinery Collection

**(illustrated)**

£695.00



553. 1806 No Incuse Hair Curl. BMC 1343.  
S3780. Near EF £45.00
554. 1825 George IV. BMC 1420. S3823.  
Near EF, toned £100.00
555. 1825 George IV. BMC 1420. S3823.  
GEF, hints of lustre **(illus)** £225.00



**PENNIES (CONTINUED)**

556. 1826 Plain Saltire on reverse. Reverse A.  
BMC 1422. S3823. EF £145.00
557. 1831 William III. No WW on truncation.  
BMC 1455. S3845. GVF £125.00
558. 1841 No Colon after REG. BMC 1484.  
S3948. EF, slight edge bruise at  
11pm on obverse. £60.00
559. 1853 O.T. BMC 1500. S3948. EF £80.00
560. 1853 O.T. BMC 1500. S3948. Far Colon.  
Unc toned, some marks. £95.00
561. 1854 O.T. BMC 1507. S3948. Far Colon.  
GEF, toned £75.00
562. 1854 O.T. BMC 1507. S3948. Far Colon.  
Almost Unc, toned. £95.00
563. 1855 P.T. BMC 1509. S3948. Close Colon.  
A/Unc traces of lustre £125.00
564. 1858 O.T. No WW. BMC 1518. S3948.  
Unc traces of lustre £125.00
565. 1858 O.T. No WW. BMC 1518. S3948.  
Date slightly double struck.  
Unc traces of lustre £195.00
566. 1858/7 O.T. BMC 1516. S3948.  
8 over 7 in date. Far Colon.  
EF, couple of minor marks. £95.00
567. 1860 BB. BMC 1617. F6. Dies 1+B. S3954.  
About Unc a little burnished.  
**(illustrated)** £150.00



568. 1865 Victoria. Toothed Border. BMC 1667.  
F50. Dies 6+G. S3954. Gouby A.  
Choice Uncirculated with traces of  
lustre  
Encapsulated by NGC as MS63 BN  
(8222423-005) **(illustrated)** £350.00



569. 1870 BMC 1686. F60. Dies 6+G. S3954.  
A/Unc toned. **(illustrated)** £250.00



570. 1874 BMC 1692. F70. Dies 7+G. S3954.  
BU Full Lustre, lightly toning.  
**(illustrated)** £295.00



571. 1876H BMC 1708. F89. Dies 8+K. S3955.  
A/Unc hints of lustre £150.00
572. 1877 BMC 1709. F91. Dies 8+J. S3954.  
Unc lustre £150.00
573. 1888 BMC 1740. F126. Dies 12+N.  
Gouby A. S3954.  
GEF, toned/burnished £50.00
574. 1892 Fair £1.00

**PENNIES (CONTINUED)**

575. 1892 Victoria. Toothed Border.  
14 teeth from the foot of the 1 to the  
front tip of the 2 in date.  
BMC 1746. F134. Dies 12+N. S3954.  
Gouby Ab. Choice BU Full Lustre, ever  
so lightly toning on obverse.  
Encapsulated by NGC as MS64 RB  
(8222423-020) **(illustrated)** £250.00



576. 1900 BMC 1947. F153. S3961.  
BU Almost Full Lustre, some minor  
toning spots. £45.00
577. 1902 S3990. BU Almost Full Lustre £40.00
578. 1912 H. Fine £2.00
579. 1918 KN. Near Fine - Fine £2.50
580. 1918 KN. Fine £3.50
581. 1965 (F255 Dies 3+H. S4157).  
BU Full Lustre £2.00
582. 1966 (F256 Dies 3+I. S4157).  
BU Full Lustre, lightly toning. £1.00
583. 1967 (F257 Dies 3+J. S4157).  
BU Full Lustre, lightly toning £1.00

**CARTWHEEL TWOPENCE**

584. 1797 George III Cartwheel Twopence.  
BMC 1077. S3777.  
Near EF, some bruises.  
**(illustrated)** £100.00

**HALFPENNIES**

585. 1694 William & Mary. BMC 602. S3452.  
VF overall but portrait bold and  
better. Some pitting. £225.00
586. 1729 George II. First Issue - Young Head.  
BMC 830. S3717. GEF toned.  
**(illustrated)** £450.00



587. 1731 George II. First Issue - Young Head.  
BMC 840. S3717. Near VF £60.00
588. 1731 George II. First Issue - Young Head.  
BMC 840. S3717. GVF £95.00
589. 1731 George II. First Issue - Young Head.  
BMC 840. S3717.  
Near EF, some marks £195.00
590. 1732 George II. First Issue - Young Head.  
BMC 842. S3717. VF or better £95.00
591. 1732 George II. First Issue - Young Head.  
BMC 842. S3717.  
EF, some marks on reverse. £275.00
592. 1733 George II. First Issue - Young Head.  
BMC 845. S3717. GVF £125.00
593. 1734 George II. First Issue - Young Head.  
BMC 847. S3717. Near EF £295.00
594. 1734 George II. First Issue - Young Head.  
BMC 848. S3717.  
No Stops on Obverse.  
VF, very rare £195.00
595. 1735 George II. First Issue - Young Head.  
BMC 849. S3717.  
EF, weak strike with hints of lustre  
£300.00
596. 1736 George II. First Issue - Young Head.  
BMC 850. S3717.  
EF or better £300.00
597. 1737 George II. First Issue - Young Head.  
BMC 851. S3717. Near VF £75.00
598. 1740 George II. Second Issue - Old Head.  
BMC 870. S3718. EF, toned. £300.00

**HALFPENNIES (CONTINUED)**

599. 1746 George II. Second Issue - Old Head.  
BMC 876. S3719.  
EF but struck from a rusty die £95.00
600. 1748 George II. Second Issue - Old Head.  
BMC 878. S3719. Unc with a hint of  
lustre on both sides.  
**(illustrated)** £475.00



601. 1749 George II. Second Issue - Old Head.  
BMC 879. S3719. About Uncirculated  
with traces of lustre on both sides.  
£450.00
602. 1749 George II. Second Issue - Old Head.  
BMC 879. S3719.  
Choice Unc, toned.  
**(illustrated)** £450.00



603. 1750 George II. Second Issue - Old Head.  
BMC 880. S3719. EF, toned. £250.00
604. 1751 George II. Second Issue - Old Head.  
BMC 881. S3719. GEF £325.00
605. 1751 George II. Second Issue - Old Head.  
BMC 881. S3719.  
Choice Unc, toned. **(illus)** £450.00



606. 1752 George II. Second Issue - Old Head.  
BMC 882. S3719.  
Choice Unc toned £375.00
607. 1753 George II. Second Issue - Old Head.  
BMC 883. S3719.  
Virtually Unc, toned. £300.00
608. 1753 George II. Second Issue - Old Head.  
BMC 883. S3719.  
Choice Unc, toned. £395.00
609. 1754 George II. Second Issue - Old Head.  
BMC 884. S3719.  
Choice Unc toned £375.00
610. 1770 George III. Reverse A. BMC 893.  
S3774. EF £195.00
611. 1771 George III. BMC 896. S3774.  
Reverse A. EF, light scratches in  
front of obverse portrait. £125.00
612. 1771 George III. BMC 896. S3774.  
Reverse A. Near EF £150.00
613. 1772 George III. BMC 899. S3774.  
Reverse A. VF £50.00
614. 1772 George III. BMC 899. S3774.  
Reverse A. Near EF £150.00
615. 1772 George III. BMC 900. S3774.  
Reverse A. GEORIVS error.  
EF £450.00
616. 1772 George III. BMC 900. S3774.  
Reverse A. GEORIVS error.  
GEF, toned. **(illustrated)** £525.00



617. 1772 George III. BMC 901. S3774.  
Reverse A. Ball below spear blade.  
GEF £225.00
618. 1772 George III. BMC 902. S3774.  
Reverse B. GEF £225.00
619. 1774 George III. BMC 907. S3774.  
Reverse C. GVF/Near EF £125.00
620. 1775 George III. BMC 908. S3774.  
Reverse C. Near EF £150.00

**HALFPENNIES (CONTINUED)**

621. 1799 George III. BMC 1248. S3778.  
5 Incuse gunports on ship.  
Almost Unc toned. £70.00
622. 1799 George III. BMC 1248. S3778.  
5 Incuse gunports on ship.  
A/Unc hints of lustre £95.00
623. 1806 George III. BMC 1376. S3781.  
No berries - No line under 'SOHO'.  
Unc, toned. £75.00
624. 1806 George III. BMC 1376. S3781.  
No berries - No line under 'SOHO'.  
Choice Unc, toned. £85.00
625. 1806 George III. BMC 1377. S3781.  
3 Berries - Line under 'SOHO'.  
Unc good lustre £175.00
626. 1806 George III Bronzed Proof. BMC 1370.  
As Struck, some toning spots £225.00
627. 1806 George III Bronzed Proof. BMC 1370.  
KH 42. Selig 1405.  
As Struck, couple of very minor  
marks £395.00
628. 1806 George III Bronzed Proof. BMC 1363.  
Superb As Struck, small toning spot  
on obverse £350.00
629. 1806 George III Bronzed Proof. BMC 1363.  
Pleasing As Struck, some original  
Colour (**illustrated**) £450.00



630. 1827 Near EF £90.00
631. 1827 George IV. GEF or better £125.00
632. 1841 BMC 1524. S3949. Choice A/Unc  
£85.00
633. 1841 BMC 1524. S3949. Choice A/Unc  
with lustre on both sides. £95.00
634. 1841 BMC 1524. S3949. DF.I variety.  
Unc hints of lustre £95.00
635. 1841 BMC 1524. S3949.  
Choice Unc traces of lustre £110.00
636. 1853 BMC 1539. S3949. Dots on shield.  
GEF £45.00

637. 1853 BMC 1539. S3949. Dots on shield.  
A/Unc, toned £50.00
638. 1853 BMC 1539. S3949. Dots on shield.  
Choice Unc traces of lustre £75.00
639. 1853 BMC 1539. S3949. Dots on shield.  
BU Almost Full Lustre £150.00
640. 1854 BMC 1542. S3949. EF £45.00
641. 1854 BMC 1542. S3949.  
Unc traces of lustre £150.00
642. 1854 BMC 1542. S3949. Choice Unc  
with good lustre on the obverse.  
£175.00
643. 1855 BMC 1543. S3949.  
Choice Unc with a hint of lustre  
£95.00
644. 1856 BMC 1544. S3949. Uncirculated  
with a hint of lustre £125.00
645. 1857 BMC 1545. S3949.  
Reverse B - Incuse Dots.  
Unc toned £85.00
646. 1858/6 BMC 1547. S3949.  
8 over 6 in the date.  
Unc traces of lustre £145.00
647. 1862 Die letter 'A' to the left of lighthouse.  
BMC --. F290A. S3956.  
EF, brushed on obverse, extremely  
Rare (**illustrated**) £1,000.00



648. 1874H BMC 1806. F318 (R8). S3957.  
Unc, toned £125.00
649. 1887 BMC 1843. F358 (R4). S3956.  
BU Full Lustre, toning on the  
reverse. £125.00
650. 1889 BMC 1845. F360 (R5). S3956.  
Unc good lustre £70.00
651. 1889 BMC 1845. F360 (R5). S3956.  
BU Almost Full Lustre £90.00
652. 1890 BMC 1846. F362 (R3). S3956.  
BU Full Lustre £150.00
653. 1891 BMC 1848. F364 (R3). S3956.  
BU Full Lustre, lightly toning £125.00

**HALFPENNIES (CONTINUED)**

654.	1891	BMC 1848. F364 (R3). S3956. BU Full Lustre	£150.00
655.	1896	Old Head. BMC 1951. F372 1+B. S3962. BU Almost Full Lustre	£75.00
656.	1897	Old Head. BMC 1951A. F373 (R2) 1+B. S3962. Low Tide. BU Full Lustre, toned on obverse.	£75.00
657.	1899	Old Head. BMC 1954. F376. S3962. BU Full Lustre, lightly toning.	£95.00
658.	1900	Old Head. BMC 1955. F377. S3962. BU Full Lustre, lightly toning.	£95.00
659.	1901	Old Head. BMC 1956. F378. S3962. Unc good lustre	£15.00
660.	1901	Old Head. BMC 1956. F378. S3962. BU Full Lustre, lightly toning	£75.00
661.	1903	BMC 2223. F382. S3991. BU Full Lustre, some toning spots.	£55.00
662.	1905	BMC 2225. F384. S3991. BU Full Lustre, lustre streaky	£45.00
663.	1916	BMC 2291. F395. S4056. Unc good lustre	£35.00
664.	1953	S4155. Unc hints of lustre	£0.50
665.	1959	BMC 2519A. F483. S4158. BU Full Lustre	£8.00
666.	1965	BU Full Lustre	£2.00

**FARTHINGS**

667.	1955	BMC 2525. S4159. BU Full Lustre, lightly toning.	£3.00
668.	1955	BU Full Lustre	£4.00
669.	1954	BMC 2523. S4159. BU Almost Full Lustre	£2.00
670.	1954	BU Full Lustre, lightly toning.	£3.00
671.	1954	BU Full Lustre	£4.00
672.	1954	Investment parcel available for this date. All coins are BU Full Lustre. 50 Sparkling Gems. (Spink 2026 £15 BU (each)).	£65.00
673.	1953	(1 + A). BU Full Lustre, lightly toning.	£3.00
674.	1953	(1 + A). BU Full Lustre	£3.50
675.	1953	(2 + B). BMC 2521. S4156. BU Almost Full Lustre	£0.60
676.	1953	(2 + B). BU Full Lustre, lightly toning.	£1.00

677.	1953	(2 + B). BU Full Lustre	£2.00
678.	1952	BMC 2487. S4119. BU Full Lustre, lightly toning.	£3.00
679.	1952	BU Full Lustre	£4.00
680.	1951	BMC 2485. S4119. BU Almost Full Lustre	£3.00
681.	1951	BU Full Lustre, lightly toning.	£4.00
682.	1950	BMC 2483. S4119. BU Full Lustre, lightly toning.	£5.00
683.	1950	BU Full Lustre	£7.00
684.	1948	BMC 2479. S4116. Unc lustre	£2.00
685.	1948	BMC 2479. S4116. BU Full Lustre	£6.00
686.	1947	BMC 2477. S4116. BU Almost Full Lustre	£2.50
687.	1947	BU Full Lustre, lightly toning.	£3.50
688.	1946	BMC 2475. S4116. Unc good lustre	£1.00
689.	1946	BU Almost Full Lustre	£2.50
690.	1946	BU Full Lustre, lightly toning.	£4.00
691.	1945	BMC 2473. S4116. BU Almost Full Lustre	£2.00
692.	1945	BU Full Lustre, lightly toning.	£3.00
693.	1945	BU Full Lustre	£5.00
694.	1943	BMC 2469. S4116. BU Full Lustre, lightly toning.	£3.00
695.	1943	BU Full Lustre	£5.00
696.	1942	BMC 2467. S4116. BU Almost Full Lustre	£2.00
697.	1942	BU Full Lustre, lightly toning.	£3.00
698.	1942	BU Full Lustre, very lightly toning.	£3.50
699.	1942	BU Full Lustre	£5.00
700.	1936	Unc lustre	£2.00
701.	1936	Unc good lustre	£3.00
702.	1917	BMC 2329. S4059. Black Virtually BU	£6.50
703.	1917	BMC 2329. S4059. Black BU (Spink 2026 Cat value BU £20)	£10.00
704.	1891	NVF/VF	£2.50
705.	1886	GVF	£2.00
706.	1886	Near EF	£2.25
707.	1886	Unc traces of lustre	£9.00
708.	1886	Unc lustre	£10.00
709.	1886	BMC 1913. S3958. Almost Unc with good lustre	£10.00
710.	1886	Unc good lustre	£15.00
711.	1886	BU Full Lustre, lightly toning	£32.00
712.	1886	BU Full Lustre, lightly toning	£32.00

**FARTHINGS (CONTINUED)**

713.	1875H REG type. Near EF	£12.00
714.	1875H REG type. BMC 1892. S3959. Unc lustre	£30.00
715.	1875H REG type. BMC 1892. S3959. Unc good lustre	£45.00
716.	1875H REG type. BMC 1892. S3959. BU Almost Full Lustre	£80.00
717.	1869 BMC 1884. S3958. EF/GEF, very rare	£55.00
718.	1867 BMC 1878. S3958. Unc lustre	£75.00
719.	1863 Without raised dot. BMC 1867. S3958. Near VF/VF	£55.00
720.	1860 Beaded Border. BMC 1854. S3958. BU Almost Full Lustre	£80.00
721.	1858 Large Date. BMC 1586. S3950. EF	£40.00
722.	1858 Small Date. BMC --. S3950. EF, very rare ( <b>illustrated</b> )	£175.00



723.	1857 BMC 1585. S3950. Near EF	£40.00
724.	1853 WW Raised. BMC 1575. S3950. GVF	£20.00
725.	1850 BMC 1571. S3950. GEF	£100.00
726.	1849 BMC 1570. S3950. GF, rare	£60.00
727.	1848 BMC 1569. S3950. Near EF	£55.00
728.	1847 BMC 1568. S3950. GEF, a couple of minor marks	£65.00
729.	1846 From a small hoard of around 80 coins, these 1846 are all Almost Uncirculated and exhibit some original colour but they all have patchy toning. The appearance is of having been in the back of a fire grate or chimney at some time. They were found recently in Plymouth. For a rare date to turn up as a small hoard like this is indeed a rare event. They come in two varieties: a) with a small, neat 4 in the date and b) with a much larger 4, the result of the 4 being re- cut over a higher 4.	£45.00

730.	1846 BMC 1567. S3950. EF, some minor marks	£75.00
731.	1844 BMC 1565. S3950. Fine, extremely rare	£75.00
732.	1843 Barred A's in GRATIA, but with two serifs on B of BRITANNIAR. BMC 1563. S3950. GEF, traces of lustre	£45.00
733.	1842 Type A. BMC 1562. S3950. Fine	£20.00
734.	1840 DEF: (Colon). BMC 1559. S3950. Wide Date. - covers 10 border teeth. GEF	£75.00
735.	1839 2 Prongs to Trident. BMC 1554. S3950. Fine	£10.00
736.	1839 2 Prongs to Trident. BMC 1554. S3950. GF	£14.00
737.	1838 DEF. BMC 1553. S3950. A/Unc, toned.	£85.00
738.	1837 BMC 1475. S3848. Near Fine	£10.00
739.	1836 BMC 1474. S3848. Near EF, rare	£70.00
740.	1835 Reverse B (centre lines are raised). BMC 1473. S3848. Near EF	£70.00
741.	1834 Reverse A (centre lines are incuse). BMC 1470. S3848. EF or better	£40.00
742.	1834 Reverse A (centre lines are incuse). BMC 1470. S3848. About Unc	£70.00
743.	1831 BMC 1466. S3848. VF	£25.00

**Second Issue Design (1826-1830)**

744.	1830 BMC 1445. S3825. GEF	£95.00
745.	1828 BMC 1443. S3825. Near VF	£25.00
746.	1826 BMC 1439. S3825. GVF	£10.00

**First Issue Design (1821-1826)**

747.	1822 Obverse 2 (lowest 3 leaves incuse central lines). BMC 1411. S3822. Near EF	£20.00
748.	1822 Obverse 2 (lowest 3 leaves incuse central lines). BMC 1411. S3822. Unc with a trace of lustre	£95.00
749.	1807 BMC 1399. S3782. VF, rare	£20.00
750.	1806 BMC 1397 (Curls rendered with raised lines). S3782. GEF	£65.00
751.	1799 BMC 1279. 3 Berries. S3779. Near EF	£45.00

**FARTHINGS (CONTINUED)****GEORGE III CURRENCY 1771-75**

752. 1774 Obverse 1. BMC 915. S3775.  
Near VF £45.00
753. 1773 Obverse 1. BMC 911. S3775.  
Near EF £175.00
754. 1773 Obverse 1. BMC 911. S3775.  
GEF (**illustrated**) £195.00



755. 1773 Obverse 2. BMC 913. S3775.  
Choice GEF (**illustrated**) £225.00



756. 1773 Obverse 2. BMC 913. S3775.  
Choice Uncirculated, fields prooflike  
with a delightful blue tone. £275.00
757. 1754 BMC 892. S3722. GF £10.00
758. 1754 BMC 892. S3722. VF £35.00
759. 1754 BMC 892. S3722. GVF £45.00
760. 1754 BMC 892. S3722. GVF £45.00
761. 1754 BMC 892. S3722. Near EF £95.00
762. 1754 BMC 892. S3722. EF (**illus**) £175.00



763. 1749 BMC 889. S3722. Fine £20.00
764. 1749 BMC 889. S3722. GVF, rare £95.00
765. 1746 BMC 887. S3722. GVF £85.00
766. 1746 BMC 887. S3722. GVF £85.00
767. 1744 BMC 886. S3721. Near VF £50.00

768. 1739 BMC 869. S3720.  
Near EF, two digs on reverse. £95.00
769. 1739 BMC 869. S3720. EF, toned £275.00
770. 1737 Small Date. BMC 866. S3720.  
Near VF £45.00
771. 1737 Small Date. BMC 866. S3720.  
Bold GVF £125.00
772. 1737 Small Date. Very uphill date.  
BMC 866. S3720. Bold GVF £125.00
773. 1736 BMC 864. S3720. GF £30.00
774. 1736 BMC 864. S3720. VF or better £75.00
775. 1734 BMC 861. S3720. Fine £25.00
776. 1731 Long thin ribbons. BMC 858.  
S3720. GF £30.00
777. 1722 Obverse Small Letters. BMC 825.  
S3662. GF £45.00
778. 1721 BMC 822. Stop to right of wreath.  
S3662. Fine £35.00
779. 1720 BMC 818. Obverse Small Letters.  
S3662. Fine, dig on obverse. £40.00
780. 1720 BMC 818. Obverse Small Letters.  
S3662. Near VF, a little porous £50.00
781. 1719 BMC 807. Obverse Large Letters.  
Small 9 in the date. S3662.  
GF +, very rare £95.00
782. 1717 Currency, the 'Dump' issue.  
Reverse A with A/N in BRITANNIA.  
BMC 783. S3661. GF, very rare  
(**illustrated**) £275.00



783. 1714 Queen Anne Struck in Copper.  
BMC 741. S3625. Small flan 22mm.  
Dies 2+E. Reverse Inverted. 5.43g.  
Near VF, extremely rare  
(**illustrated**) £450.00



**FARTHINGS (CONTINUED)**

784. 1714 Queen Anne Struck in Copper.  
BMC 741. S3625. Small flan 22mm.  
Dies 2+E. Reverse Inverted. 5.39g.  
EF, toned, extremely rare  
**(illustrated)** £950.00



785. 1699 BMC 681. Date in Legend. S3558.  
Fine £40.00
786. 1675 BMC 528. S3394. Near VF  
**(illustrated)** £175.00



787. 1675 BMC 528. S3394.  
About EF, a hint of lustre.  
Encapsulated by NGC as AU58 BN  
(8221495-005) **(illustrated)** £595.00



788. 1675 BMC 528. S3394.  
EF hints of lustre £695.00
789. 1674 BMC 527. S3394. Fine £45.00
790. 1674 BMC 527. S3394.  
VF, very rare above Fine. £250.00
791. 1673 BMC 522. S3394. GF £55.00
792. 1672 BMC 519. S3394. GF £55.00
793. 1672 BMC 519. S3394. Near VF £95.00
794. 1672 BMC 519. S3394.  
Near VF or better £110.00

**PATTERN FARTHINGS OF CHARLES II**

795. 1676 BMC 492. Pattern Farthing in Silver.  
Plain Edge. 5.90g.  
EF and probably About As Struck for  
this issue. **(illustrated)** £850.00

**FRACTIONAL FARTHINGS****HALF FARTHINGS**

796. 1851 BMC 1597. S3951.  
Unc with traces of lustre  
**(illustrated)** £140.00



797. 1839 BMC 1590. S3951.  
BU Full Lustre, lightly toning.  
Previously encapsulated by PCGS as  
MS63RB (200206.63/34733999)  
£150.00

**THIRD FARTHINGS**

798. 1835 BMC 1477. S3850.  
Unc good lustre **(illustrated)** £175.00



799. 1827 BMC 1453. S3827.  
Almost Unc, hints of lustre £125.00
800. 1827 BMC 1453. S3827.  
BU Practically Full Lustre, a superb  
example. £295.00

**DECIMAL ODDMENTS**

801.	£5	1993 40th Anniversary of the Coronation. L2. BU	£8.00	827.	£2	2006 200th Anniversary of the Birth of Isambard Brunel. Paddington Station. K21. Almost Unc	£4.00
802.	£5	1996 70th Birthday of Queen Elizabeth II. L3. Unc	£7.00	828.	£2	2006 K9. Unc	£5.00
803.	£5	1998 Prince Charles 50th Birthday. L5. Unc	£8.00	829.	£2	2007 Tercentenary of the Act of Union between England and Scotland. K22. Almost Unc	£4.00
804.	£5	1999 Millennium Commemorative. L7. Unc	£6.00	830.	£2	2007 K9. Unc	£5.00
805.	£5	2002 Golden Jubilee commemorative 2002. L10. Unc	£7.00	831.	£2	2008 K9. BU	£5.00
806.	£5	2003 50th Anniversary of the coronation. L12. BU	£8.00	832.	£2	2009 200th Anniversary of the birth of Charles Darwin. K25. GEF	£3.00
807.	£5	2004 Centenary of Entente Cordiale 2004. L13. BU	£10.00	833.	£2	2009 250th Anniversary of the birth of Robert Burns. K24. Almost Unc	£4.00
808.	£5	2009 500th Anniversary of the accession of Henry VIII 1509. L20. Unc	£8.00	834.	£2	2009 K9. BU	£6.00
809.	£2	1994 300th Anniversary of the Bank of England. K4. Unc	£5.00	835.	£2	2010 K9. GEF	£3.00
810.	£2	1995 50th Anniversary of the End of World War II. K5. Unc	£5.00	836.	£2	2010 The Centenary of the Death of Florence Nightingale and the 150th Anniversary of the publication of NOTES ON NURSING. K26. Unc	£4.00
811.	£2	1996 European Football Championships. K7. Unc	£5.00	837.	£2	2010 K9. BU	£5.00
812.	£2	1997 K8. Unc	£4.00	838.	£2	2011 K9. Almost BU	£4.00
813.	£2	1998 K9. Unc	£4.00	839.	£2	2012 K9. Unc	£4.00
814.	£2	1999 K9. A/Unc	£4.00	840.	£2	2012 The 200th Anniversary of the Birth of Charles Dickens. K29. BU	£8.00
815.	£2	2000 K9. GEF	£3.00	841.	£2	2013 K9. Unc	£4.00
816.	£2	2001 The centenary of Guglielmo Marconi's first wireless transmission across the Atlantic. K11. A/Unc	£4.00	842.	£2	2013 350th Anniversary of the Guinea. K30. GEF	£4.00
817.	£2	2001 K9. BU	£5.00	843.	£2	2013 150th Anniversary of the London Underground. K32. Unc	£5.00
818.	£2	2002 K9. Unc	£4.00	844.	£2	2014 500th Anniversary of Trinity House. K33. Almost Unc	£3.00
819.	£2	2002 Scotland. Commonwealth Games commemorative. K14. A/Unc	£6.00	845.	£2	2014 K9. Unc	£4.00
820.	£2	2003 K9. Unc	£4.00	846.	£2	2014 500th Anniversary of Trinity House. K33. Unc	£4.00
821.	£2	2004 K9. Almost Unc	£4.00	847.	£2	2015 K9. Unc	£4.00
822.	£2	2004 200th Anniversary of the first steam locomotive. K17. Unc	£4.00	848.	£2	2015 K9. Unc	£4.00
823.	£2	2005 K9. Unc	£4.00	849.	£2	2015 World War I, The Royal Navy. K35. BU	£8.00
824.	£2	2005 400th Anniversary of the Gunpowder plot. K18. Unc	£4.00	850.	£2	2016 400th Anniversary of the death of William Shakespeare. K39. Unc	£4.00
825.	£2	2005 60th Anniversary of the End of World War II. K19. BU	£7.00	851.	£1	1984 Scotland. J2. Unc	£3.00
826.	£2	2006 200th Anniversary of the Birth of Isambard Brunel. K20. Almost Unc	£4.00	852.	£1	1985 Wales. J3. Unc	£2.00
				853.	£1	1986 Proof. Ireland. J4. FDC	£6.00
				854.	£1	1987 England. J5. Unc	£2.00
				855.	£1	1988 Crowned Royal Shield. J6. Almost Unc	£3.00

**DECIMAL ODDMENTS (CONTINUED)**

856.	£1	1989 Scotland. J7. Unc	£2.00
857.	£1	1990 Wales. J3. Almost Unc	£2.00
858.	£1	1991 Ireland. J4. Unc	£2.00
859.	£1	1992 England. J5. Unc	£2.00
860.	£1	1993 Royal Arms. J8. Unc	£2.00
861.	£1	1993 Royal Arms. J8. Unc	£2.00
862.	£1	1994 Scotland. J9. Unc	£2.00
863.	£1	1995 Wales. J10. Unc	£2.00
864.	£1	1996 Northern Ireland. J11. Almost Unc	£2.00
865.	£1	1997 England. J12. Almost Unc	£2.00
866.	£1	2000 Wales. J15. Unc	£2.00
867.	£1	2001 Northern Ireland. J16. Almost Unc	£2.00
868.	£1	2002 England. J17. Unc	£2.00
869.	£1	2003 Royal Arms design. J13. Unc	£2.00
870.	£1	2004 Scotland. Forth Railway Bridge. J18. Unc	£2.00
871.	£1	2005 Wales. Menai Straits Bridge. J19. Unc	£2.00
872.	£1	2006 Northern Ireland. Egyptian Arch Railway Bridge. J20. Unc	£2.00
873.	£1	2007 England. Gateshead Millennium Bridge. J21. Unc	£2.00
874.	£1	2008 Royal Arms design. J13. Unc	£2.00
875.	£1	2008 A shield of Our Royal Arms. J27. Unc	£2.00
876.	£1	2009 A shield of Our Royal Arms. J27. Almost Unc	£1.50
877.	£1	2010 A shield of Our Royal Arms. J27. Almost Unc	£1.50
878.	£1	2010 A shield of Our Royal Arms. J27. Unc	£2.00
879.	£1	2010 Belfast. J29. Almost Unc	£2.00
880.	£1	2011 A shield of Our Royal Arms. J27. Almost Unc	£1.50
881.	£1	2011 Cardiff. J31. Unc	£3.00
882.	£1	2012 A shield of Our Royal Arms. J27. Almost Unc	£1.50
883.	£1	2013 England. Depicts an oak branch paired with a Tudor inspired rose. J32. EF	£1.50
884.	£1	2013 Wales. Depicts a leek and a daffodil with their leaves entwined. J33. Unc	£3.00

885.	£1	2014 A shield of Our Royal Arms. J27. Almost Unc	£1.50
886.	£1	2015 A shield of Our Royal Arms. J27. Unc	£2.00
887.	£1	2016 Bimetallic. Nations of the Crown. J39. BU	£3.00
888.	£1	2018 Bimetallic. Nations of the Crown. J39. BU	£4.00
889.	50p	1969 H1. BU	£4.00
890.	50p	1973 Accession to European Economic Community. Reverse The inscription '50 PENCE' and the date of the year, surrounded by nine hands, symbolizing the nine members of the community, clasping one another in a mutual gesture of trust, assistance and friendship. H2. BU	£3.00
891.	50p	1980 H1. BU, a couple of minor bagmarks.	£3.00
892.	20p	2008 Error obverse. Undated 20p Rare Error Mule. G4A. The new reverse design does not include the year date. This should appear on the obverse but a number of coins were struck using the previous undated obverse as G3 thus creating what is known as a mule. Unc ( <b>illustrated</b> )	£80.00



893.	5p	1970 D1. BU	£1.00
894.	1/2p	1971 A1. BU	£1.00

**Selling Your Coins?**

We are always keen to acquire new material.

If you are contemplating selling any of your coins, whether it be your whole collection or just individual pieces or duplicates.

Please do not hesitate to contact to us, we are always keen to buy new material.

**ROYAL MINT CURRENCY SETS**

895. 1983 Royal Mint Currency Set with Error Reverse 2p 'New Pence'.

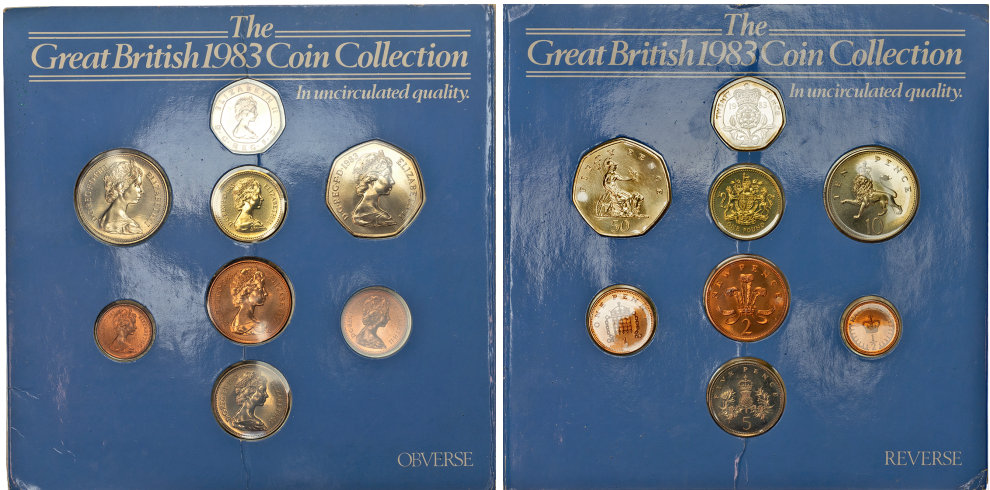
The Great British 1983 Coin Collection Set.

UK £1 to 1/2p (8 coins). Two pence with ERROR reverse.

Inscription 'NEW PENCE' instead of 'TWO PENCE'.

In Uncirculated quality. (**illustrated**)

£1,100.00



*Notes*

---

---

*Notes*

---

