

# COLIN COOKE

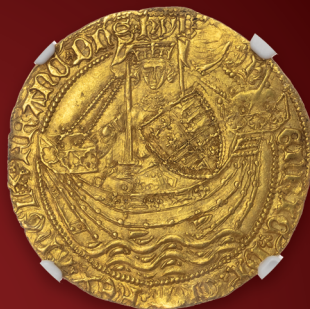


COLIN COOKE LTD

PO BOX 602, ALTRINCHAM, WA14 5UN

TELEPHONE: 0161 927 9524

website: [www.colincooke.com](http://www.colincooke.com) email: [coins@colincooke.com](mailto:coins@colincooke.com)



AUGUST 2025



**Managing Director – Lee Brownson**

**Callers by appointment only**, as coins are not kept on the premises.

**Hours of Business:** Mon – Sat only. 8.00am. to 4.30pm. (Sat only to 12.00pm.)

**Tel** - 0161-927-9524

**WhatsApp** - 0161-927-9524

**E-Mail** - [coins@colincooke.com](mailto:coins@colincooke.com)

**Address** - COLIN COOKE LTD, PO BOX 602, ALTRINCHAM, WA14 5UN

LEE BROWNSON will attend to your Telephone/E-mail/Letter orders.

Replies can be addressed directly to any of us at the address given on the front cover.

Postage will be added to all orders.

**Cheques** - should be made payable to **Colin Cooke Ltd.**

**Cards** – All major Credit and Debit card's accepted.

**Bank Transfer** - Natwest, Underbank Hall Branch, Stockport

Colin Cooke Ltd, Account No: 54651239, Sort Code: 01-08-38

### **Email PDF Lists**

We are now able to offer this list and all future lists by email in a PDF format.

If you would like to receive the PDF version in full colour, please send us an email so that we then have your email address on record and we can add you to the email mailing list for future lists.

**VISIT OUR WEBSITE**

**At**

***www.colincooke.com***

**Our website has thousands more pictures for you to view and is an invaluable reference for any coin collector.**

**All coins can be viewed in full colour on our website.**



**HAMMERED GOLD**

1. James I Unite. Second Coinage, 1604-19.  
Half-length second bust. mm. lis. 1604/5.  
S2618. N2083. Bold GVF  
£4,750.00
2. Edward IV Gold Ryal or Rose Noble.  
First Reign, 1461-70.  
Light coinage, 1464-70. London Mint.  
Small trefoils in spandrels.  
mm Crown (1466-7). S1951, N1549.  
Weight 7.68g.  
Extremely Fine, portrait pleasing with  
some weakness to legend.  
(illustrated) £5,950.00



3. Henry VIII Gold Half-sovereign, 1509-47.  
Third coinage, 1544-7. Tower.  
S2294. N1827. Mm pellet in annulet.  
Weight 6.23g.  
Bold GVF, some parts nearer to EF.  
The King unusually well struck up.  
(illustrated) £5,750.00



4. Edward VI Half Sovereign.  
Third period, 1550-3, Crown Gold  
(22ct.). mm Tun 1551-3.  
Half length figure of King holding  
sword and orb. S2451. N1928. 5.52g.  
GVF - Near EF, ever so lightly creased.  
£9,950.00



5. Elizabeth I Gold Half Pound.  
Second Issue. mm. Cross crosslet  
1560-1. Bust 3C. N1982. S2520.  
5.43g. About EF, slightly weak on  
crown with a light reddish tone.  
£9,750.00
6. Edward III Noble. Fourth Coinage, 1351-77.  
Pre-Treaty period, 1351-61. Series E.  
S1488. Tower Mint. 7.28g.  
Near EF £6,950.00
7. Edward III Noble. Fourth Coinage, 1351-77.  
Treaty Period, 1361-69. S1503.  
N1232. Annulet before EDWARD.  
Near EF  
Ex Glendining 20/7/1976 £6,950.00
8. ANGLO-GALLIC. Henry VI,  
King of France (1422-53), gold Salut  
d'Or, St Lo Mint. Mm Lis.  
Fr 18. Elias 271. 3.49g.  
Choice GEF (illustrated) £2,500.00



9. Henry VI Gold Noble, First Reign, 1422-61.  
Annulet issue, 1422-c.1430. London.  
S1799. N1414. Annulet by sword  
arm, and in one spandrel on the  
reverse.; trefoil stops on the obverse  
with lis after HENRIC, annulets on  
reverse, with mullet after IhC.  
Weight 7.00g.  
Encapsulated by NGC as MS62  
(8540250-002) (illustrated)  
£8,750.00

**HAMMERED GOLD (CONTINUED)**

10. Netherlands Kampen Rose Noble, in style of Edward IV. Fr. 151.  
Inverted C on flag. 7.62g.  
Choice GEF and About As Struck.  
(illustrated) £4,500.00



11. Edward IV Gold Angel.  
Second Reign, 1471-83.  
S2091. N1626. London.  
mm Cinquefoil. Weight 5.06g.  
Near EF  
Encapsulated by NGC as AU55  
(6768343-001)  
(illustrated) £4,995.00



12. Edward III Half Noble.  
Treaty period, 1361-69. S1506.  
N1238. London. 3.83g.  
Saltire before Edward. mm Cross 3.  
Choice GEF and About As Struck  
£5,750.00

**MILLED GOLD****FIVE GUINEAS**

13. 1681 Charles II 5 Guineas.  
Elephant and Castle below.  
Second laur. bust. T.TERTIO.  
S3332. EGC 194.  
Bold GF, some marks, mounted.  
£5,750.00

**TWO GUINEAS**

14. 1738 George II Two Guineas.  
Young Laureate Head. S3667B.  
Near EF £5,950.00

**SOVEREIGNS**

15. 1831 William IV Sovereign. First bust.  
S3829. Choice Virtually BU, fields  
prooflike, very minor edge graze at  
5 o'clock on reverse. £4,500.00

**HALF SOVEREIGNS**

16. 1817 George III Half Sovereign. S3786.  
Fine £450.00

**GOLD FIVE POUNDS**

17. 1887 Gold Victoria Five Pounds.  
Jubilee bust. S3864.  
Choice Almost Unc, fields prooflike,  
obverse bruise at 5 o'clock.  
(illustrated) £3,250.00



**GOLD TWO POUNDS**

18. 1887 Victoria Gold £2. Jubilee bust. S3865.  
Almost Unc with brilliance.  
(illustrated) £1,750.00

**HAMMERED SILVER**

19. 1642 Charles I Half Pound. Shewsbury Mint.  
mm Plume. Declaration reverse.  
No cannon in arms, no plume in  
obverse field. S2924. N2368.  
Some weak areas otherwise Near  
Very Fine, toned.  
(illustrated) £2,750.00



20. James I Crown. Third Coinage, 1619-25.  
S2665. Plume over Shield.  
mm Lis 1623-4. King on horseback  
with grass ground line.  
Bold GVF, some parts better, small  
flan crack from strike.  
(illustrated) £4,500.00



21. 1646 Charles I Newark Halfcrown.  
Weight 15.17g. S3140A. N2638.  
Brooker 1222.  
Bold GVF/Near EF, toned, the reverse  
well struck. (illustrated) £3,750.00





**HAMMERED SILVER (CONTINUED)**

22. Charles II Hammered Issue Halfcrown,  
1660-2. First Issue.  
Without inner circles or mark of  
value. Mm Crown on obverse only.  
S3307. N2759. Weight 14.94g.  
Almost Extremely Fine, marvellous  
blue toning with underlying mint  
lustre. **(illustrated)** £9,950.00



23. Edward VI Shilling.  
Second period, Jan. 1549- Apr. 1550.  
Second Issue, debased. Bust 3.  
1549 in Roman numerals.  
mm Arrow (over G on reverse).  
4.63g. S2466. N1917/1.  
Some weakness in legend but overall  
portrait GVF, very rare £850.00
24. Charles I, 1625-49 Shilling.  
Second Milled Issue, 1638-9.  
Shilling by Nicholas Briot.  
London Mint. mm Anchor. wt. 6.03g.  
S2859. N2305.  
Near VF, some weakness to legend.  
£650.00
25. 1653 Commonwealth Shilling.  
mm Sun. S3217. N2724. ESC 124.  
Weight 6.00g.  
Weak in parts, Near VF £350.00
26. 1656 Commonwealth Shilling.  
mm Sun. S3217. N2724. ESC 150.  
Weight 5.75g.  
GVF, some parts better, attractive  
tone. £975.00
27. 1564/2 Elizabeth I Sixpence.  
Milled Coinage. Large broad bust.  
mm Star. 2.87g. S2597. N2028.  
Near VF, creased and straightened.  
£295.00

28. 1651 Pattern Commonwealth Sixpence by  
Blondeau. mm Sun.  
ESC 1498, R2. Bull 217.  
GVF, toned **(illustrated)** £2,500.00



29. Henry V, 1413-22 Groat. Series C. London.  
Normal 'frowning' bust.  
Mullet on right shoulder.  
mm Pierced Cross. wt. 3.68g. S1765.  
N1387. VF, toned.  
With old ticket dated 1984 £395.00
30. Henry VI, First Reign, 1422-61 Groat.  
Annulet issue, 1422-c.1430.  
Calais Mint. Annulets at neck.  
S1836. N1427. 3.77gm.  
mm Incurved pierced cross both  
sides (1422-7). VF or better £275.00
31. Henry VIII, 1509-47 Groat.  
Second Coinage, 1526-44.  
Tower Mint. Laker bust D.  
mm Arrow. wt. 2.66g. S2337E.  
N1797. Near VF, some minor marks.  
£250.00
32. Mary, 1553-54 Groat. Crowned bust.  
Tower Mint. mm Pomegranate.  
S2492. N1960.  
Bold GVF - Near EF £650.00
33. Mary, 1553-54 Groat. Crowned bust.  
Tower Mint. mm Pomegranate.  
S2492. N1960. Weight 2.08g.  
Extremely Fine for issue, strong  
portrait, pleasing tone.  
**(illustrated)** £1,450.00





**HAMMERED SILVER (CONTINUED)**

34. Charles I Groat. Aberystwyth Bust.  
mm Book. 1.92g. S2891. N2337.  
About EF for issue. £495.00
35. Eadred, 946-955 Penny. Two line type.  
Moneyer Wane. wt. 1.15g. S1113.  
N706. Extremely Fine, well struck.  
**(illustrated)** £1,500.00



36. Aethelred II (978-1016) Penny.  
S1148. N770. London Mint.  
Moneyer AELFGAR. Crux type.  
Bare-headed bust left, with sceptre.  
Reverse Voided short cross with  
letters C, R, V, X in angles.  
About EF, portrait bold. £750.00
37. Aethelred II, 978-1016 Penny.  
Long Cross type.  
Bare-headed bust left. London Mint.  
Moneyer WOLFWINE. Wt. 1.89g.  
S1151. N774. GVF, flan lightly  
crimped. £350.00
38. Cnut, 1016-1035 Penny.  
Short Cross type (c.1029-1035/6).  
Aelfwig on Cambridge. S1159.  
EF pleasing £695.00
39. William I (1066-1087) 1d.  
S1250, B.M.C 1. N839.  
Profile Left Type. Bath mint.  
Brungar as moneyer.  
Weight 1.09g. VF, toned.  
**(illustrated)** £1,450.00



40. Henry II, 1154-1189 Penny.  
Short Cross Coinage, 1180-1189.  
Class 1b1. Winchester Mint.  
Moneyer GOCELM. wt. 1.42g. S1344.  
N963. Weak in legend, overall VF  
with a clear portrait. £325.00
41. 1561 Elizabeth I Threepfarthings.  
With rose and date.  
Third and Fourth Issues. mm Pheon.  
Weight 0.4g. S2571. N2002.  
GVF, well struck and scarce. £375.00

**MILLED SILVER****CROWNS**

42. 1679 Charles II Crown. T. PRIMO.  
Third dr. bust. Ten harp strings.  
S3358. ESC 56. Bull 403.  
Near EF, toned.  
Ex Spink Numismatic Circular Feb  
1898 (P2606, no 43238), described  
'a choice specimen FDC -£1-15.0'  
**(illustrated)** £3,750.00



**CROWNS (CONTINUED)**

43. 1707 Queen Anne Crown.  
Roses and Plumes in angles.  
S3578. Bull 1343. ESC 102.  
Pre Union with Scotland.  
SEXTO on edge.  
Choice GEF, delightfully toned.  
Exceptionally well struck.  
**(illustrated)** £4,950.00



44. 1818 George III. LVIII. Laur. head. S3787.  
GEF attractively toned, two digs to  
right of bust and one or two marks  
on the reverse. £450.00
45. 1820 LX. S3787. ESC 216. Bull 2013.  
EF, toned. £495.00
46. 1887 JH. S3921. GEF toned £150.00
47. 1887 JH. S3921.  
Virtually BU with brilliance £225.00
48. 1891 S3921. Fine £40.00
49. 1893 LVI. S3937. GEF, toned, some  
minor marks. £250.00
50. 1928 Wreath. S4036.  
EF, light scratches on face. £150.00
51. 1951 Festival of Britain Crown. Bare head.  
George and dragon, date in exergue.  
Proof-like. Virtually BU in original  
purple box, slight old sticker mark on  
box. £18.00

52. 1953 S4136. BU £8.00
53. 1953 Proof. S4136. Practically FDC £80.00
54. 1953 Proof. S4136. Practically FDC £80.00
55. 1965 BU £2.50
56. 1972 BU £1.50
57. 1977 BU £1.50
58. 1980 BU £2.00
59. 1981 BU £2.00

**DOUBLE FLORINS**

60. 1887 Arabic 1. S3923.  
Virtually BU, attractively toned.  
£195.00

**HALFCROWNS**

61. 1689 William & Mary. 1st Bust. 1st Shield.  
PRIMO. No frosting, with pearls.  
S3435. Near EF, attractively toned.  
£1,350.00
62. 1717 George I. Roses & Plumes in angles.  
TIRTIO. S3642. ESC 1554. Bull 589.  
Near EF/EF, attractively toned.  
**(illustrated)** £2,500.00



63. 1723 George I. SSC in angles. DECIMO.  
ESC 1557 (592). S3643.  
7 strings to harp.  
GEF, attractively toned.  
**(illustrated)** £4,500.00



**HALFCROWNS (CONTINUED)**

64. 1746 LIMA below bust. D.NONO.  
S3695A, ESC 606, Bull 1688.  
Choice EF, attractively toned and  
pleasing. £950.00
65. 1817 George III. Large Head. S3788.  
ESC 616. Choice Virtually Mint State,  
some golden hints on obverse.  
£650.00
66. 1834 WW in script. S3834. ESC 662.  
Bull 2478. GF £50.00
67. 1834 William IV. WW in script. S3834.  
ESC 662. Bull 2478.  
Almost BU, light tone, light flaw on  
truncation. £695.00
68. 1842 Victoria Halfcrown.  
S3888. ESC 675. Bull 2717.  
Choice Virtually Mint State with  
brilliance. (**illustrated**) £1,850.00



69. 1880 S3889. Near EF £250.00
70. 1880 S3889. Choice Virtually Mint State,  
couple of nicks on edge. £550.00
71. 1881 S3889. GEF, some marks, the  
reverse choice £350.00
72. 1883 S3889. GEF or better £325.00
73. 1883 S3889. Choice Almost Uncirculated  
£395.00
74. 1883 S3889. Choice Almost BU £450.00
75. 1883 S3889. Virtually BU, light marks.  
£475.00
76. 1885 S3889. EF, a couple of minor marks  
£295.00
77. 1885 S3889. Almost BU, lustrous light  
golden tone. Surface marks visible  
under close inspection. £450.00
78. 1885 Victoria. S3889. Choice Almost Mint  
State, light golden tone with  
underlying brilliance. £550.00

79. 1886 S3889. GEF, bright £295.00
80. 1887 JH. S3924. Almost BU, attractively  
toned. £85.00
81. 1887 YH. S3889. GEF, light toning,  
miniscule bruise on obverse £275.00
82. 1889 S3924. Fine £20.00
83. 1889 S3924. Choice Practically Mint  
State £225.00
84. 1891 S3924. Virtually BU £295.00
85. 1892 S3924. Virtually BU £250.00
86. 1893 S3938. Choice Virtually Mint State,  
fields prooflike £195.00
87. 1893 S3938. Choice Practically Mint State,  
ever so light attractive toning.  
£225.00
88. 1893 Proof Victoria Halfcrown.  
S3938. ESC 727. Virtually As Struck,  
pleasing and attractively toned.  
£750.00
89. 1894 S3938. Choice Almost BU £295.00
90. 1894 S3938. Virtually BU £350.00
91. 1897 S3938. Choice Virtually BU £195.00
92. 1897 S3938. Choice Virtually Mint State,  
light golden tone, fields prooflike.  
£225.00
93. 1899 S3938. Choice Virtually Mint State  
£250.00
94. 1899 S3938. Choice Virtually Mint State  
£250.00
95. 1900 S3938. Virtually BU £195.00
96. 1900 S3938. Virtually BU, exquisite  
blue/gold toning on obverse. £195.00
97. 1901 S3938. About Unc, toned. £145.00
98. 1901 S3938. Almost BU, delightfully  
toned. £150.00
99. 1901 S3938. Choice Virtually BU,  
attractive tone. £195.00
100. 1901 S3938. Choice Virtually BU, light  
gold tone £195.00
101. 1902 Edward VII. S3980.  
Choice Practically Mint State £250.00
102. 1902 Edward VII Matt Proof. S3980.  
Practically As Struck £225.00
103. 1902 Edward VII Matt Proof. S3980.  
As Struck, light hairlines on  
obverse. £225.00
104. 1905 Key Date Edward VII. S3980.  
Fine £475.00

**HALFCROWNS (CONTINUED)**

105.	1906	Edward VII. S3980. Near EF	£195.00
106.	1906	Edward VII. S3980. Choice Practically Mint State, delightful mauve toning.	£695.00
107.	1907	Edward VII. S3980. Choice Almost Uncirculated, toned.	£550.00
108.	1907	Edward VII. S3980. Virtually BU	£550.00
109.	1909	Edward VII. S3980. Choice Almost Uncirculated	£550.00
110.	1910	Edward VII. S3980. EF, lustrous	£225.00
111.	1910	Edward VII. S3980. Virtually BU, attractively toned.	£450.00
112.	1910	Edward VII. S3980. Virtually BU	£450.00
113.	1914	George V. S4011. Virtually BU, lightly toned.	£150.00
114.	1915	George V. S4011. Virtually BU	£125.00
115.	1916	George V. S4011. Almost BU	£110.00
116.	1917	George V. S4011. BU, couple of minor marks	£150.00
117.	1918	George V. S4011. Almost BU	£110.00
118.	1921	George V. S4021A. GEF	£125.00
119.	1922	George V. S4021A. GEF	£125.00
120.	1924	George V. S4021A. EF/GEF	£95.00
121.	1927	George V Proof Halfcrown. S4037. As Struck	£150.00
122.	1935	S4037. Almost BU	£30.00
123.	1935	George V. S4037. BU	£45.00
124.	1935	George V. S4037. BU	£45.00
125.	1937	George VI Proof. S4080. FDC	£45.00
126.	1943	George VI. S4080. BU	£25.00
127.	1944	George VI. S4080. BU	£25.00
128.	1945	George VI. S4080. BU	£20.00
129.	1948	S4101. Almost BU	£6.00
130.	1949	S4106. GEF	£8.00
131.	1950	GEF	£8.00
132.	1950	George VI. S4106. Almost BU, toned	£20.00
133.	1951	George VI. S4106. Almost BU, toned.	£20.00
134.	1953	Elizabeth II. S4137. ESC 798G. Davies 2310 (Dies 1+A). 'I' of 'DEI' to space. BU, toned	£5.00
135.	1961	S4145. BU	£8.00
136.	1961	Elizabeth II. S4145. BU, toned.	£8.00

137.	1962	Elizabeth II. S4145. BU	£10.00
138.	1965	Almost BU	£3.50
139.	1965	Elizabeth II. S4145. BU	£5.00
140.	1967	Elizabeth II. S4145. BU	£3.00
141.	1970	Elizabeth II Proof. S4145. ESC 798Y. Davies 2339 (Dies 3C). 'I' of 'Gratia' right of bead. FDC	£10.00

**FLORINS**

142.	1852	Gothic Florin. S3891. ESC 806. Choice Virtually BU, light mauve toning.	£750.00
143.	1887	JH. S3925. Almost BU, toned	£60.00
144.	1887	JH. S3925. Almost BU, toned	£60.00
145.	1887	JH. S3925. Virtually BU, attractively toned. Choice	£70.00
146.	1900	S3939. Almost BU, couple of minor marks	£150.00
147.	1905	Key Date Edward VII Florin. S3981. Virtually BU, choice ( <b>illustrated</b> )	£1,750.00



148.	1909	Edward VII. S3981. Near EF	£200.00
149.	1922	S4022A. Near EF	£30.00
150.	1922	S4022A. GEF	£50.00
151.	1924	S4022A. Virtually BU	£145.00
152.	1937	S4081. Almost BU	£20.00
153.	1937	Proof. S4081. FDC	£35.00
154.	1939	S4081. GEF	£8.00
155.	1941	S4081. BU	£25.00
156.	1942	S4081. Virtually BU	£20.00
157.	1943	S4081. Almost BU	£20.00
158.	1945	S4081. GEF	£8.00
159.	1945	S4081. Almost BU	£20.00
160.	1948	Almost BU	£8.00
161.	1953	Proof. S4138. FDC, lightly toning from the box on obverse.	£30.00
162.	1953	Proof. S4138. FDC	£40.00
163.	1965	Virtually BU	£1.50
164.	1965	BU	£3.00
165.	1966	BU	£3.00
166.	1967	BU	£1.25



**SHILLINGS**

167. 1693 William & Mary. S3437. ESC 1076.  
Conjoined bust.  
Fine, pleasing (**illustrated**) £175.00



168. 1695 William III. First bust. S3497.  
ESC 1077. Near VF (**illus**) £125.00



169. 1696 William III. NORWICH MINT  
(N below). First Bust. S3501.  
ESC 1085. No Stop after GVLIELMVS.  
GF (**illustrated**) £120.00



170. 1697 William III. First bust. S3497.  
ESC 1091. Near EF, reverse better  
£295.00

171. 1703 Queen Anne. VIGO below.  
Second bust. S3586. ESC 1131.  
Bull 1388. Choice GEF, attractively  
toned with hints of gold.  
(**illustrated**) £2,250.00



172. 1708 Queen Anne. E\* BELOW.  
Second bust. S3609. ESC 1145.  
Fine (**illustrated**) £125.00



173. 1711 Queen Anne. Plain in Angles.  
Fourth bust. S3618. ESC 1158.  
VF (**illustrated**) £120.00



174. 1712 Queen Anne. Roses & Plumes in  
Angles. Fourth bust. S3617. ESC 1159.  
GF (**illustrated**) £95.00



175. 1723 George I. 1st Bust. SSC in angles.  
S3647. ESC 1176.  
EF or better, lustrous  
(**illustrated**) £350.00



176. 1739 George II. Young Head.  
Roses in angles. S3701. ESC 1201.  
Bull 1713. Extremely Fine, attractively  
toned. £695.00

**SHILLINGS (CONTINUED)**

177. 1743 George II. Old Head. Roses in angles.  
S3702. ESC 1203. Near VF  
(**illustrated**) £75.00



178. 1746 George II. LIMA below. Old Head.  
S3703. ESC 1206 (R2). GF  
(**illustrated**) £110.00



179. 1750 George II. Old Head. Plain in angles.  
Wide O in date. S3704. ESC 1211.  
GF/Near VF (**illustrated**) £65.00



180. 1758 George II. Old Head. Plain in angles.  
S3704. ESC 1213.  
Choice EF or better  
(**illustrated**) £225.00



181. 1787 With Hearts. ESC 1225. S3746.  
GVF or better, attractively toned.  
(**illustrated**) £85.00



182. 1816 S3790. Near EF (**illustrated**) £60.00



183. 1816 S3790. EF, bright (**illustrated**) £60.00



184. 1816 S3790. GEF, toned. (**illus**) £85.00



185. 1816 S3790. Almost BU (**illus**) £150.00





**SHILLINGS (CONTINUED)**

186. 1816 S3790. Choice Virtually BU  
(**illustrated**) £175.00



187. 1816 S3790. Practically Mint State  
(**illustrated**) £195.00



188. 1817 George III. Laur head. S3790.  
GVF (**illustrated**) £50.00



189. 1817 George III. Laur head. S3790.  
GVF, darkly toned. (**illus**) £50.00



190. 1817 George III. Laur head. S3790.  
GVF or better (**illustrated**) £55.00



191. 1817 George III. Laur head. S3790.  
Near EF, toned (**illustrated**) £70.00



192. 1817 George III. Laur head. S3790.  
Almost BU, lustrous (**illus**) £175.00



193. 1817 George III. Laur head. S3790.  
Choice Virtually BU, lustrous  
(**illustrated**) £195.00



194. 1817 George III. Laur head. S3790.  
Virtually BU, attractively toned.  
(**illustrated**) £195.00



**SHILLINGS (CONTINUED)**

195. 1817 RRIIT flaw. S3790.

Almost Uncirculated (**illus**) £275.00196. 1817 GEOE error. S3790. ESC 1232A (R3).  
E/R in GEOR. GEF, a couple of digs on  
portrait. (**illustrated**) £375.00197. 1818 S3790. Near VF (**illustrated**) £40.00198. 1818 High 8. S3790. ESC 1234a (R).  
GEF, light golden tone. (**illustrated**)  
£175.00199. 1819 S3790. Near VF (**illustrated**) £35.00200. 1819 S3790. EF, toned (**illustrated**) £90.00201. 1819 S3790. GEF (**illustrated**) £110.00202. 1819 S3790. Almost BU, attractively toned.  
(**illustrated**) £195.00203. 1820 S3790. EF (**illustrated**) £90.00204. 1820 S3790. GEF, some flaws on obverse  
(**illustrated**) £95.00



**SHILLINGS (CONTINUED)**

205. 1820 S3790. Almost BU, toned.  
(illustrated) £175.00



206. 1820 S3790. Virtually BU, lustrous  
(illustrated) £195.00



207. 1821 S3810. Choice Virtually BU  
(illustrated) £395.00



208. 1823 S3811. GVF, very rare (illus) £175.00



209. 1824 S3811. GVF (illustrated) £95.00



210. 1825 George IV. Laur. Head. S3811.  
EF, once cleaned now re toning.  
(illustrated) £75.00



211. 1825 George IV. Laur. Head. S3811.  
GEF, perhaps once cleaned now re  
toned. (illustrated) £125.00



212. 1825 George IV. Bare Head. S3812.  
Bull 2405. ESC 1254.  
Almost BU, some marks and  
hairlines. (illustrated) £225.00



213. 1825 George IV. Bare Head. S3812.  
Bull 2405. ESC 1254.  
Almost BU, fields prooflike  
(illustrated) £295.00



214. 1825 George IV. Bare Head. S3812.  
Bull 2405. ESC 1254.  
Almost BU, toned. £395.00

**SHILLINGS (CONTINUED)**

215. 1826 George IV. S3812. Near Fine £12.00

216. 1826 George IV. S3812. Near VF £40.00

217. 1826 George IV. S3812. Near EF/ EF  
(illustrated) £80.00



218. 1826 George IV. S3812. EF, toned  
(illustrated) £95.00



219. 1826 George IV. S3812. EF, toned  
(illustrated) £95.00



220. 1826 George IV Proof. Bare Head. S3812.  
As Struck, light golden tone.  
(illustrated) £995.00



221. 1827 Key Date. S3812.  
Near VF, very rare (illus) £95.00



222. 1827 Key Date. S3812.  
EF, light golden tone. Very rare  
(illustrated) £375.00



223. 1829 S3812. GF (illustrated) £45.00



224. 1829 S3812. Near VF (illustrated) £75.00



225. 1829 S3812. GEF, light golden tone, rare  
(illustrated) £450.00





**SHILLINGS (CONTINUED)**

226. 1834 William III. S3835. GEF  
(illustrated) £295.00



227. 1834 William III. S3835. GEF  
(illustrated) £295.00



228. 1835 William III. S3835. Choice Virtually BU, attractive orange/gold toning.  
(illustrated) £550.00



229. 1838 S3902. Near EF (illustrated) £150.00



230. 1839 No initials on Truncation. S3904.  
GF (illustrated) £30.00



231. 1839 No initials on Truncation. S3904.  
EF/GEF, darkly toned. £250.00

232. 1840 S3904. Fine, rare (illustrated) £40.00



233. 1840 S3904. GF, rare (illustrated) £60.00



234. 1841 S3904. GVF (illustrated) £115.00



235. 1842 S3904. Near EF, attractively toned.  
(illustrated) £150.00



236. 1843 S3904. Fine, rare (illustrated) £60.00



**SHILLINGS (CONTINUED)**

237. 1844 S3904. GF or better (**illus**) £40.00



238. 1844 S3904. GVF (**illustrated**) £70.00



239. 1844 S3904. Near EF/EF (**illus**) £150.00



240. 1845 S3904. Fine (**illustrated**) £40.00



241. 1845 S3904. Almost BU, rare (**illustrated**) £525.00



242. 1846 S3904. GF/Near VF (**illus**) £45.00



243. 1846 S3904. EF, toned. (**illus**) £175.00



244. 1848/6 S3904. Fine (**illustrated**) £70.00



245. 1849 S3904. Near EF/EF (**illus**) £195.00



246. 1851 Key Date. S3904. ESC 1298 (R2).  
Bull 2999. Fine, rare (**illustrated**) £95.00





**SHILLINGS (CONTINUED)**

247. 1852 S3904. GVF, toned (**illus**) £75.00



248. 1852 S3904. Almost BU, attractively toned. (**illustrated**) £350.00



249. 1853 S3904. Near VF (**illustrated**) £45.00



250. 1853 S3904. Near EF/EF, toned. (**illustrated**) £150.00



251. 1855 S3904. Near EF (**illustrated**) £150.00



252. 1855 S3904. GEF/Almost BU, toned. (**illustrated**) £250.00



253. 1856 S3904. Almost Unc, lustrous (**illustrated**) £275.00



254. 1856 S3904. Choice Virtually BU (**illustrated**) £395.00



255. 1857 S3904. GF/Near VF (**illus**) £45.00



256. 1858 S3904. Near VF (**illustrated**) £40.00



**SHILLINGS (CONTINUED)**

257. 1858 S3904. GEF, cleaned on obverse  
(**illustrated**) £75.00



258. 1858 S3904. Near EF (**illustrated**) £150.00



259. 1858 S3904. Choice Virtually BU  
(**illustrated**) £395.00



260. 1859 S3904. GF or better (**illus**) £40.00



261. 1859 S3904. Choice Virtually BU  
(**illustrated**) £450.00



262. 1860 S3904. GVF or better (**illus**) £95.00



263. 1861 S3904. Near VF (**illustrated**) £45.00



264. 1861 S3904. Almost BU (**illus**) £395.00



265. 1862 S3904. GF, rare (**illustrated**) £70.00



266. 1862 S3904. Near EF, rare  
(**illustrated**) £275.00





**SHILLINGS (CONTINUED)**

267. 1863 S3904. About Fine, very rare  
(**illustrated**) £95.00



268. 1864 S3905. Die Number 7.  
Almost BU, lustrous  
(**illustrated**) £395.00



269. 1865 S3905. Die Number 99.  
EF/GEF (**illustrated**) £195.00



270. 1865 S3905. Die Number 41.  
GEF (**illustrated**) £225.00



271. 1866 S3905. Die Number 70.  
Almost BU (**illustrated**) £325.00



272. 1866 S3905. Die Number 58.  
Virtually BU (**illustrated**) £350.00



273. 1866 Die Number 44. S3905.  
Choice Practically Mint State £395.00

274. 1868 S3906A. Die Number 34.  
Almost BU (**illustrated**) £350.00



275. 1869 S3906A. Die Number 12.  
GEF (**illustrated**) £195.00





**SHILLINGS (CONTINUED)**

276. 1870 S3906A. Die Number 16.  
Choice Almost BU  
(**illustrated**) £350.00



277. 1871 S3906A. Die Number 14.  
GEF (**illustrated**) £175.00



278. 1871 S3906A. Die Number 21.  
GEF (**illustrated**) £175.00



279. 1871 S3906A. Die Number 12.  
Almost BU (**illustrated**) £350.00



280. 1872 S3906A. Die Number 120. EF  
(**illustrated**) £145.00



281. 1872 S3906A. Die Number 37.  
Virtually BU (**illustrated**) £350.00



282. 1879 S3907. No Die Number. GVF  
(**illustrated**) £50.00



283. 1879 S3907. No Die Number.  
Almost BU, some minor marks.  
£275.00

284. 1879 S3907. No Die Number.  
Almost BU (**illustrated**) £295.00



**SHILLINGS (CONTINUED)**

285. 1880 S3907. Virtually BU (illustrated) £295.00



286. 1881 S3907. GVF (illustrated) £50.00



287. 1882 S3907. GF, rare (illustrated) £35.00



288. 1883 S3907. Near EF, lightly toned. £95.00

289. 1883 S3907. Near EF (illustrated) £95.00



290. 1884 S3907. EF (illustrated) £95.00



291. 1884 S3907. Almost BU (illus) £225.00



292. 1885 S3907. GEF, some minor marks. £95.00

293. 1885 S3907. Choice Virtually BU (illustrated) £250.00



294. 1886 S3907. GEF (illustrated) £95.00



295. 1887 Small Jubilee Head Proof Shilling.  
S3926. About As Struck, delightfully  
toned. (illustrated) £395.00



**SHILLINGS (CONTINUED)**

296. 1887 JH. Rev. C. S3926. GVF £10.00

297. 1887 JH. Rev. C. S3926. Choice Virtually BU, exquisite purple toning. **(illustrated)** £50.00



298. 1887 JH. Rev. C. S3926. Virtually BU, lustrous **(illustrated)** £50.00



299. 1887 YH. S3907. GVF the reverse better **(illustrated)** £65.00



300. 1888 S3926. Not 8/7. GEF toned, extremely rare **(illustrated)** £175.00



301. 1888 S3926. Not 8/7. Almost BU, extremely rare **(illustrated)** £250.00



302. 1888/7 S3926. Almost BU **(illus)** £85.00



303. 1888/7 S3926. Choice BU **(illus)** £120.00



304. 1889 LH. S3927. Almost BU **(illus)** £85.00



305. 1889 LH. S3927. Virtually BU **(illus)** £95.00



306. 1889 LH. S3927. Mint State, some hairlines in the fields. £110.00



**SHILLINGS (CONTINUED)**

307. 1889 LH. S3927. Choice BU (**illus**) £125.00



308. 1889 SH. S3926. ESC 1354.  
Fine, extremely rare (**illus**) £35.00



309. 1889 SH. S3926. ESC 1354.  
Near EF, extremely rare  
(**illustrated**) £275.00



310. 1890 S3927. GEF £70.00

311. 1890 S3927. Choice Virtually BU  
(**illustrated**) £115.00



312. 1890 S3927. Choice BU (**illus**) £150.00



313. 1892 S3927. Almost BU (**illus**) £145.00



314. 1892 S3927. Choice Virtually BU  
(**illustrated**) £195.00



315. 1893 Old Head. ESC 1361. S3940.  
Almost BU (**illustrated**) £75.00



316. 1893 Old Head. ESC 1361. S3940.  
Choice Virtually BU (**illus**) £95.00



317. 1893 Old Head. ESC 1361. S3940.  
Choice Virtually BU, orange toning.  
(**illustrated**) £95.00



**SHILLINGS (CONTINUED)**

318. 1893 Proof. Old Head. ESC 1362. S3940.  
Virtually As Struck, toned.  
(**illustrated**) £375.00



319. 1894 ESC 1363. S3940.  
Almost BU (**illustrated**) £135.00



320. 1895 Small Rose. S3940.  
Almost BU, attractively toned.  
(**illustrated**) £125.00



321. 1896 ESC 1365. S3940A. Larger Rose.  
Almost BU (**illustrated**) £125.00



322. 1896 ESC 1365. S3940A. Larger Rose.  
Almost BU (**illustrated**) £125.00



323. 1897 S3940A. Choice Virtually Mint State  
(**illustrated**) £150.00



324. 1898 S3940A. GEF £65.00  
325. 1898 S3940A. Virtually BU (**illus**) £150.00



326. 1899 S3940A. Virtually BU, light scratch  
in obverse field. £65.00  
327. 1899 S3940A. GEF (**illustrated**) £75.00



328. 1900 S3940A. GEF, toned (**illus**) £50.00





**SHILLINGS (CONTINUED)**

329. 1900 S3940A. Virtually BU, attractively toned. **(illustrated)** £95.00



330. 1901 S3940A. GEF **(illustrated)** £50.00



331. 1902 Edward VII. S3982. Choice GEF or better £75.00

332. 1902 Edward VII. S3982. Almost BU £95.00

333. 1902 Edward VII. S3982. Virtually BU **(illustrated)** £105.00



334. 1902 Edward VII. S3982. Choice Mint State, exquisite olive toning. **(illustrated)** £140.00



335. 1902 Edward VII Matt Proof. S3982. Superb As Struck **(illus)** £195.00



336. 1903 Edward VII. S3982. Near EF **(illustrated)** £95.00



337. 1903 Edward VII. S3982. GEF, toned **(illustrated)** £175.00



338. 1904 Edward VII. S3982. Near EF/EF toned **(illus)** £125.00



339. 1904 Edward VII. S3982. EF **(illus)** £150.00





**SHILLINGS (CONTINUED)**

340. 1904 Edward VII. S3982.  
Choice Virtually BU (**illus**) £450.00



341. 1905 Edward VII. S3982.  
Fine, very rare (**illustrated**) £95.00



342. 1905 Edward VII. S3982. Near VF £250.00

343. 1905 Key Date Edward VII Shilling.  
S3982. EF £1,250.00

344. 1906 Edward VII. S3982.  
Almost BU, light golden tone. £125.00

345. 1906 Edward VII. S3982.  
Almost BU (**illustrated**) £125.00



346. 1906 Edward VII. S3982.  
Almost BU (**illustrated**) £125.00



347. 1907 Edward VII. S3982.  
Almost BU (**illustrated**) £195.00



348. 1907 Edward VII. S3982.  
Choice Virtually Mint State  
(**illustrated**) £250.00



349. 1908 Edward VII. S3982. EF (**illus**) £175.00



350. 1909 Edward VII. S3982.  
Choice Virtually BU (**illus**) £450.00



351. 1910 Edward VII. S3982. Fine £8.00

352. 1910 Edward VII. S3982. EF £75.00

353. 1910 Edward VII. S3982. EF (**illus**) £75.00



**SHILLINGS (CONTINUED)**

354. 1910 Edward VII. S3982.  
Choice Virtually BU £150.00

355. 1910 Edward VII. S3982.  
Choice Practically Mint State  
(**illustrated**) £175.00



356. 1911 S4013. GEF (**illustrated**) £40.00



357. 1911 S4013. Almost BU £65.00

358. 1911 S4013. Almost BU £65.00

359. 1911 S4013. Virtually BU (**illus**) £70.00



360. 1911 S4013. Choice Virtually Mint State,  
light attractive toning. £80.00

361. 1911 George V Proof Shilling. S4013.  
Superb As Struck  
(**illustrated**) £150.00



362. 1912 S4013. Almost BU (**illus**) £95.00



363. 1912 S4013. Almost BU (**illus**) £95.00



364. 1913 S4013. GEF (**illustrated**) £95.00



365. 1913 S4013. Almost BU, lightly toned.  
(**illustrated**) £195.00



366. 1914 S4013. BU, lightly toned.  
(**illustrated**) £90.00





**SHILLINGS (CONTINUED)**367. 1914 S4013. BU (**illustrated**) £90.00368. 1915 S4013. BU (**illustrated**) £90.00369. 1915 S4013. BU, lightly toned (**illustrated**) £90.00370. 1916 S4013. Choice BU, light attractive toning. (**illustrated**) £95.00371. 1917 S4013. Almost BU (**illus**) £85.00372. 1917 S4013. BU (**illustrated**) £125.00373. 1918 S4013. Almost BU (**illus**) £75.00374. 1919 S4013. Almost BU (**illus**) £75.00375. 1919 S4013. Virtually BU (**illus**) £85.00376. 1920 S4023. GEF (**illustrated**) £75.00



**SHILLINGS (CONTINUED)**

377. 1920 S4023. Almost BU (**illus**) £120.00



378. 1920 S4023. Almost BU (**illus**) £120.00



379. 1921 Nose to S. S4023. GEF (**illus**) £70.00



380. 1921 Nose to S. S4023. Almost BU (**illustrated**) £125.00



381. 1922 S4023A. GEF/Almost BU (**illustrated**) £95.00



382. 1922 S4023A. Choice Virtually BU (**illustrated**) £125.00



383. 1923 S4023A. Choice Virtually BU, lustrous (**illustrated**) £95.00



384. 1923 S4023A. Choice Virtually BU, attractively toned. (**illus**) £95.00



385. 1924 S4023A. Almost BU, a couple of minor marks (**illustrated**) £95.00



386. 1925 S4023A. Choice Virtually BU (**illustrated**) £150.00



**SHILLINGS (CONTINUED)**

387. 1926 Modified effigy. S4033. Almost BU £50.00
388. 1926 Modified effigy. S4033. Virtually BU (**illustrated**) £60.00



389. 1927 George V Proof Shilling. S4039. As Struck, lightly toned. (**illustrated**) £95.00



390. 1927 1st Issue. S4039. Almost BU (**illustrated**) £65.00



391. 1927 1st Issue. S4039. Virtually BU (**illustrated**) £75.00



392. 1930 S4039. Near VF £10.00

393. 1930 S4039. GEF, rare (**illustrated**) £75.00



394. 1937S Proof. S4083. FDC £35.00
395. 1944E Almost BU £15.00
396. 1946E Virtually BU £12.00
397. 1948S Almost BU £8.00
398. 1949S Almost BU £20.00
399. 1949S BU £30.00
400. 1953E BU £6.00
401. 1953E Proof. S4139. FDC £20.00
402. 1953E Proof. S4139. FDC £20.00
403. 1953E Proof. S4139. FDC £20.00
404. 1953S BU £6.00
405. 1953S Proof. S4140. FDC £20.00
406. 1953S Proof. S4140. FDC £20.00
407. 1955E BU £8.00
408. 1956S Elizabeth II VIP Proof Shilling. S---. ESC 4494 R6. As Struck (**illustrated**) £850.00



409. 1959S VF £1.00
410. 1959S GVF £2.00
411. 1959S S4148. EF/GEF £20.00
412. 1965E BU £2.00
413. 1966E BU £2.00
414. 1966S BU £2.00

**Selling Your Coins?**

We are always keen to acquire new material.

If you are contemplating selling any of your coins, whether it be your whole collection or just individual pieces or duplicates.

Please do not hesitate to contact to us, we are always keen to buy new material.

**SIXPENCES**

415. 1651 Pattern Commonwealth Sixpence by Blondeau. mm Sun. ESC 1498, R2. Bull 217. GVF, toned  
(illustrated) £2,500.00



416. 1683 Charles II. S3382. ESC 1523. Choice GEF, light golden tone.  
(illustrated) £750.00



417. 1686 James II. Early shields. S3412. ESC 1525. Choice EF or better, attractively toned.  
(illustrated) £1,500.00



418. 1696 William III. y below (YORK). Early harp, 1st bust. Large Crowns. S3525. ESC 1539. GEF, pleasing £395.00

419. 1703 Queen Anne. VIGO below. S3590. ESC 1582. Choice EF or better, exquisitely toned.  
(illustrated) £550.00



420. 1707 Queen Anne. E below (EDINBURGH). Angles plain. After Union. S3620. ESC 1588. EF, attractively toned.  
(illustrated) £595.00



421. 1717 George I. Roses & Plumes in angles. S3651. ESC 1597. Near EF, toned, rare (illustrated) £495.00



422. 1790 Pattern Sixpence by Droz. ESC 2219. Superb As Struck, delightfully toned.  
(illustrated) £750.00



423. 1791 Pattern Sixpence by Droz. ESC 2222. About As Struck, attractively toned.  
(illustrated) £750.00



424. 1825 Laur. Head. S3814. Almost BU (illustrated) £225.00





**SIXPENCES (CONTINUED)**

425. 1826 George IV Proof. Bare Head. S3815.  
Encapsulated by NGC as PF66 CAMEO  
(8540249-003)  
Top Pop and finest graded  
(illustrated) £1,750.00



426. 1834 S3836. Almost BU  
(illustrated) £275.00



427. 1835 S3836. Choice Mint State,  
attractively toned.  
Encapsulated by NGC as MS63  
(6381344-023) £395.00

428. 1835 S3836. Choice Mint State,  
exquisitely toned.  
(illustrated) £395.00



429. 1839 S3908. Almost BU, toned £275.00

430. 1852 S3908. Choice Practically Mint  
State, fields prooflike  
(illustrated) £395.00



431. 1853 S3908. Choice Practically Mint  
State, fields prooflike  
(illustrated) £375.00



432. 1873 S3910. Die Number 78.  
Choice Virtually BU, delightful gold  
bluey green toning. £295.00

433. 1875 S3910. Die Number 2.  
Almost BU, light gold tone. £245.00

434. 1877 Die Number 32. A/Unc toned £175.00

435. 1883 S3912. GEF, delightfully toned.  
£125.00

436. 1886 S3912. Almost BU, attractively  
toned. £150.00

437. 1887 YH. S3912. Virtually BU attractively  
toned. £140.00

438. 1893 OH. S3941. GEF £45.00

439. 1898 S3941. Old veiled bust.  
Choice Practically Mint State,  
attractive blue olive toning. £95.00

440. 1901 S3941. Old veiled bust.  
Almost BU £60.00

441. 1910 Edward VII. S3983. Bare head.  
GEF toned £55.00

442. 1910 S3983. Bare head.  
Choice Virtually BU, toned £80.00

443. 1911 S4014. Almost BU £45.00

444. 1916 Almost BU £50.00

445. 1926 ME. S4034. Virtually BU £50.00

446. 1926 ME. S4034. BU, exquisitely toned.  
£85.00

447. 1928 S4040. EF £10.00

448. 1932 S4041. GEF £25.00

449. 1936 S4041. GEF £10.00

450. 1936 S4041. Almost BU £16.00

451. 1936 S4041. Virtually BU £20.00

452. 1953 BU £6.00

453. 1953 Proof. S4141. FDC £20.00

454. 1953 Proof. S4141. FDC £20.00

455. 1956 BU £12.00

456. 1959 BU £8.00

457. 1965 BU £2.00

458. 1967 BU £1.00

**SILVER THREEPENCES**

459.	1887	JH. S3931. Virtually As Struck, toned. Lovely blue, orange tone on reverse.	£30.00
460.	1893	OH. S3942. Virtually BU, toned	£50.00
461.	1897	EF	£16.00
462.	1900	S3942. Almost BU	£40.00
463.	1901	S3942. Almost BU, toned	£35.00
464.	1901	S3942. Almost BU, toned	£35.00
465.	1902	S3984. GEF	£15.00
466.	1902	S3984. BU, attractively toned	£40.00
467.	1908	S3984. Fine	£1.25
468.	1908	S3984. Almost BU, toned, slight nick on edge.	£30.00
469.	1908	S3984. Virtually BU, lightly toned.	£50.00
470.	1913	S4015. Virtually BU, toned	£30.00
471.	1933	S4042. Almost BU	£20.00
472.	1937	S4085. BU	£12.00
473.	1937	Proof. S4085. Virtually FDC, toned	£15.00
474.	1940	S4085. BU	£25.00
475.	1942	S4085. BU	£45.00

**GROATS**

476.	1836	GEF, toned	£85.00
------	------	------------	--------

**BRASS THREEPENCES**

477.	1937	Proof. S4112. FDC, lightly toned	£20.00
478.	1946	Fine, rare	£6.00
479.	1946	GF, rare	£8.00
480.	1949	Fine	£5.00
481.	1953	BU Full Lustre	£4.00
482.	1953	Proof. S4152. FDC, lightly toning.	£15.00
483.	1965	BU Full Lustre	£4.00
484.	1967	BU Full Lustre	£2.00
485.	1970	Proof. FDC	£5.00

**MAUNDY ODDMENTS**

486.	4d	1835 William IV. S3841. As Struck	£75.00
487.	4d	1851 Victoria. S3917. As Struck, toned	£45.00
488.	4d	1902 Edward VII Matt Proof. S3986. As Struck	£35.00
489.	4d	1904 Edward VII. S3986. Unc, toned	£45.00
490.	4d	1905 Edward VII. S3986. Unc, toned	£30.00
491.	4d	1935 George V. S4044. As Struck, toned.	£35.00
492.	2d	1840 Victoria. S3919. As Struck, toned.	£40.00
493.	2d	1904 Edward VII. S3988. Unc, toned	£40.00
494.	2d	1905 Edward VII. S3988. As Struck, toned	£35.00
495.	2d	1911 George V. S4019. As Struck, delightfully toned.	£40.00
496.	2d	1922 George V. S4030. As Struck	£40.00
497.	2d	1968 Elizabeth II. S4134. As Struck	£40.00
498.	1d	1792 George III. S3760. 'Wire Money' GEF	£95.00
499.	1d	1800 George III. S3761. GEF	£65.00
500.	1d	1820 George III. S3796. As Struck, toned.	£75.00

**MAUNDY SETS**

501.	1867	Victoria Maundy Set. S3916. EF-Unc, toned	£295.00
502.	1873	Victoria Maundy Set. S3916. Almost Unc - Unc lustrous and delightfully toned.	£265.00
503.	1902	Edward VII Matt Proof Maundy Set. S3985. As Struck, toned.	£195.00

**CORONATION MEDALS**

504. 1630 Charles I Silver Medal.  
Birth of Prince Charles 29th May.  
24mm. (Mli 254/36). Eimer 116.  
EF, toned  
Ex Baldwins Dec 2011 £195  
(tickets enclosed) £295.00
505. 1766 William Pitt Bronze Medal by Pingo.  
Rare 1766 'Re Deal of the Stamp Act'.  
Eimer 718. As Struck £495.00

**PENNIES**

506. 1797 George III Cartwheel Penny.  
BMC 1132. S3777.  
10 leaves in wreath on obverse.  
Choice Uncirculated with  
considerable red lustre on both sides.  
Conservatively encapsulated by NGC  
as MS63 RB (8222421-012) £795.00
507. 1797 Bronzed Proof. BMC 1122.  
As Struck, exquisite blue, purple, gold  
toning. Very Scarce £895.00
508. 1797 Bronzed Proof. BMC 1118.  
Virtually As Struck, pleasing and very  
scarce £795.00
509. 1806 Copper Proof Penny. BMC 1329.  
Superb As Struck with some  
original red lustre on both sides.  
Encapsulated by NGC as PF 64 BN  
(6319316-002)  
Ex The Coinery Collection £695.00
510. 1841 No Colon after REG. BMC 1484.  
S3948. EF, slight edge bruise at  
11pm on obverse. £60.00
511. 1853 P.T. About EF, some edge nicks,  
rare £75.00
512. 1853 O.T. Close Colon. EF £80.00
513. 1853 O.T. Choice Uncirculated £175.00
514. 1854 O.T. BMC 1507. S3948. Far Colon.  
A/Unc with hints of lustre Wrongly  
Encapsulated as Plain Trident in an  
old NGC holder as MS61 BN  
(576770-005) £125.00
515. 1854 P.T. BMC 1506. S3948. Near Colon.  
Choice Unc toned. £150.00
516. 1854 P.T. BMC 1506. S3948. Near Colon.  
Choice Uncirculated with a hint of  
lustre £160.00

517. 1858 O.T. No WW. F struck over B in DEF.  
GVF £150.00
518. 1865 Victoria. Toothed Border.  
BMC 1667. F50. Dies 6+G. S3954.  
Gouby A. Choice Uncirculated with  
traces of lustre  
Encapsulated by NGC as MS63 BN  
(8222423-005) £350.00
519. 1874H BMC 1696. F71. Dies 7+G. S3955.  
A/Unc with traces of lustre £150.00
520. 1876H BMC 1708. F89. Dies 8+K. S3955.  
A/Unc hints of lustre £150.00
521. 1876H BMC 1708. F89. Dies 8+K. S3955.  
A/Unc with traces of lustre on both  
sides. £150.00
522. 1877 BMC 1709. F91. Dies 8+J. S3954.  
Unc traces of lustre £150.00
523. 1888 BMC 1740. F126. Dies 12+N.  
Gouby A. S3954.  
GEF, toned/burnished £50.00
524. 1889 BMC 1741A. F128. Dies 13+N.  
Gouby C. S3954. 14 leaves.  
Uncirculated with full lustre but now  
toning, £95.00
525. 1890 BMC 1742. F130. Dies 12+N. S3954.  
BU Full Lustre, lightly toning. £195.00
526. 1892 Fair £1.00
527. 1892 Victoria. Toothed Border.  
14 teeth from the foot of the 1 to the  
front tip of the 2 in date. BMC 1746.  
F134. Dies 12+N. S3954. Gouby Ab.  
Choice BU Full Lustre, ever so lightly  
toning on obverse.  
Encapsulated by NGC as MS64  
RB (8222423-020) £250.00
528. 1900 BMC 1947. F153. S3961.  
Unc good lustre £30.00
529. 1900 BMC 1947. F153. S3961.  
BU Almost Full Lustre, some minor  
toning spots. £45.00
530. 1901 BMC 1948. F154. S3961.  
Unc good lustre £15.00
531. 1902 S3990. Unc good lustre £30.00
532. 1902 S3990. BU Almost Full Lustre £40.00
533. 1912 H. Fine £2.00
534. 1918 KN. Near Fine - Fine £2.50
535. 1918 KN. Fine £3.50
536. 1919 BMC 2255. F185. S4051.  
BU Almost Full Lustre £45.00



**PENNIES (CONTINUED)**

537.	1920	BMC 2258. F188. S4051.	
		Unc lustre	£25.00
538.	1920	BMC 2258. F188. S4051.	
		Unc good lustre/BU Almost Full Lustre	£30.00
539.	1921	S4051. Unc lustre	£30.00
540.	1926	ME. BMC 2265. F195. Dies 4+B.	
		Gouby B. S4054. Near Fine	£15.00
541.	1927	BMC 2267. F197. Dies 4+C.	
		BU Full Lustre, lightly toning.	£35.00
542.	1936	(BMC 2359. F214 Dies 5+C. S4055).	
		BU Full Lustre, lightly toning.	£24.00
543.	1936	(BMC 2359. F214 Dies 5+C. S4055).	
		BU Full Lustre, lightly toning.	£24.00
544.	1965	(F255 Dies 3+H. S4157).	
		BU Full Lustre	£2.00
545.	1966	(F256 Dies 3+I. S4157).	
		BU Full Lustre, lightly toning.	£1.00
546.	1967	(F257 Dies 3+J. S4157).	
		BU Full Lustre, lightly toning	£1.00
547.	1967	(F257 Dies 3+J. S4157).	
		BU Full Lustre	£1.50

**HALFPENNIES**

548.	1694	William & Mary. BMC 602. S3452.	
		VF overall but portrait bold and better. Some pitting.	£225.00
549.	1694	William & Mary. BMC 602. S3452.	
		Bold GVF - Near EF, a pleasing example.	£450.00
550.	1699	William III. BMC 687.	
		Date in Exergue. S3556.	
		Near VF	£95.00
551.	1718	George I Dump Issue. BMC 774.	
		S3659. VF, slightly double struck on reverse.	£195.00
552.	1720	George I Mis Strick Error. BMC 795.	
		Fine	£120.00
553.	1731	George II. First Issue - Young Head. BMC 840. S3717.	
		Near EF, some marks	£195.00
554.	1740	George II. Second Issue - Old Head. BMC 870. S3718. EF, toned.	£300.00
555.	1745	George II. BMC 875. S3718.	
		Near EF	£175.00
556.	1746	EF but struck from a rusty die	£95.00

557.	1751	George II. Second Issue - Old Head. BMC 881. S3719.	
		Choice Unc, toned.	£395.00
558.	1753	George II. Second Issue - Old Head. BMC 883. S3719.	
		Choice Unc, toned.	£395.00
559.	1754	George II. BMC 884. S3719.	
		Near EF	£175.00
560.	1772	George III. BMC 899. S3774.	
		Reverse A. VF	£50.00
561.	1788	George III Pattern Copper Halfpenny by Pingo. Edge milled. BMC 918.	
		This example is Superb As Struck with underlying mint brilliance and excessively rare.	
		We can only find one other example with the milled edge sold in the last 20 years - the Gregory example which was only GVF.	
		<b>(illustrated)</b>	£4,950.00



562.	1799	George III. BMC 1248. S3778.	
		5 Incuse gunports on ship.	
		A/Unc hints of lustre	£95.00
563.	1799	George III. BMC 1248. S3778.	
		5 Incuse gunports on ship.	
		Unc hints of lustre	£110.00
564.	1799	George III. BMC 1249. S3778.	
		6 Relief gunports on ship.	
		Choice Uncirculated with traces of lustre	£135.00
565.	1799	George III. BMC 1249. S3778.	
		6 Relief gunports on ship.	
		Unc traces of lustre	£135.00

**HALFPENNIES (CONTINUED)**

566.	1799	Gilt Proof. BMC 1233. Pattern (early Soho). Edge, grained. K on shoulder, brooch - 6 jewels. KH16. Almost As Struck	£695.00	585.	1853	BMC 1539. S3949. Dots on shield. A/Unc, toned	£50.00
567.	1799	Copper Proof. BMC 1235. Pattern (early Soho). Edge, grained. Almost As Struck with original colours.	£395.00	586.	1853	BMC 1539. S3949. Dots on shield. BU Almost Full Lustre	£150.00
568.	1799	Bronzed Proof. BMC 1246. Pattern (late Soho). Edge, grained. Almost As Struck	£395.00	587.	1853	5 over 5 in date. BMC 1539. S3949. Italic 5. A/Unc cleaned.	£50.00
569.	1806	George III. BMC 1376. S3781. No berries - No line under 'SOHO'. Choice Unc, toned.	£95.00	588.	1853/2	BMC 1538. S3949. 3 over 2 in the date. Unc a hint of lustre on the reverse.	£125.00
570.	1806	George III. BMC 1377. S3781. 3 Berries - Line under 'SOHO'. Unc good lustre	£175.00	589.	1853/2	BMC 1538. S3949. 3 over 2 in the date. Unc traces of lustre	£150.00
571.	1806	George III Bronzed Proof. BMC 1370. As Struck, some toning spots	£225.00	590.	1854	BMC 1542. S3949. EF	£45.00
572.	1806	George III Bronzed Proof. BMC 1370. KH 42. Selig 1405. As Struck, couple of very minor marks	£395.00	591.	1854	BMC 1542. S3949. Unc traces of lustre	£150.00
573.	1806	George III Bronzed Proof. BMC 1363. Superb As Struck, small toning spot on obverse	£350.00	592.	1855	BMC 1543. S3949. Unc a hint of lustre	£95.00
574.	1806	George III Bronzed Proof. BMC 1363. Pleasing As Struck, some original colour	£450.00	593.	1856	BMC 1544. S3949. GEF	£65.00
575.	1827	Near EF	£90.00	594.	1856	BMC 1544. S3949. Uncirculated with a hint of lustre	£125.00
576.	1827	George IV. GEF or better	£125.00	595.	1857	BMC 1546. S3949. Reverse A. EF, scratches in the reverse fields.	£30.00
577.	1827	George IV. BMC 1438. S3824. Unc some lustre both sides.	£225.00	596.	1857	BMC 1545. S3949. Reverse B - Incuse Dots. Unc toned	£85.00
578.	1841	BMC 1524. S3949. Choice A/Unc	£85.00	597.	1858	BMC 1549. S3949. Unc traces of lustre	£115.00
579.	1841	BMC 1524. S3949. Choice A/Unc with lustre on both sides.	£95.00	598.	1858/6	BMC 1547. S3949. 8 over 6 in the date. Unc traces of lustre, some minor marks.	£125.00
580.	1841	BMC 1524. S3949. DF.I variety. Unc hints of lustre	£95.00	599.	1858/7	BMC 1548. S3949. 8 over 7 in the date. Unc hints of lustre	£125.00
581.	1841	BMC 1524. S3949. Choice Unc traces of lustre	£110.00	600.	1860	Beaded Border. 1+A. BMC 1750. Fr 258 (R8). S3956. BU Full Lustre, minor marks.	£175.00
582.	1841	BMC 1524. S3949. Unc good lustre	£140.00	601.	1864	BMC 1782. F295 (R10). S3956. Unc some lustre on reverse.	£175.00
583.	1841	Inverted die Axis. DF.I variety. GVF, some marks and a light stain but very rare	£125.00	602.	1874H	BMC 1806. F318 (R8). S3957. Unc, toned	£125.00
584.	1853	BMC 1539. S3949. Dots on shield. GEF	£45.00	603.	1880	BMC 1827. F340 (R12). S3956. Unc good lustre or better	£175.00
				604.	1881H	BMC 1831. F344 (R10). S3957. Unc good lustre	£175.00
				605.	1884	BMC 1837. F352 (R5). S3956. Unc traces of lustre	£95.00
				606.	1887	BMC 1843. F358 (R4). S3956. BU Full Lustre, toning on the reverse.	£125.00

**HALFPENNIES (CONTINUED)**

607.	1889	BMC 1845. F360 (R5). S3956.	
		Unc good lustre	£70.00
608.	1889	BMC 1845. F360 (R5). S3956.	
		BU Almost Full Lustre	£90.00
609.	1890	BMC 1846. F362 (R3). S3956.	
		Unc good lustre	£55.00
610.	1890	BMC 1846. F362 (R3). S3956.	
		BU Full Lustre	£150.00
611.	1891	BMC 1848. F364 (R3). S3956.	
		BU Full Lustre, lightly toning	£125.00
612.	1891	BMC 1848. F364 (R3). S3956.	
		BU Full Lustre	£150.00
613.	1892	BMC 1850. F366 (R5). S3956.	
		Unc lustre	£95.00
614.	1893	BMC 1852. F368 (R4). S3956.	
		BU Full Lustre	£175.00
615.	1895	Old Head. BMC 1950. F370 (R2).	
		S3962. BU Full Lustre	£110.00
616.	1896	Old Head. BMC 1951. F372 1+B.	
		S3962. BU Almost Full Lustre	£75.00
617.	1897	S3962. Unc good lustre	£30.00
618.	1897	Old Head. BMC 1951A. F373 (R2)	
		1+B. S3962. Low Tide.	
		BU Full Lustre, toned on obverse.	£75.00
619.	1899	Old Head. BMC 1954. F376. S3962.	
		BU Full Lustre, lightly toning.	£95.00
620.	1900	Old Head. BMC 1955. F377. S3962.	
		BU Full Lustre, lightly toning.	£95.00
621.	1901	Old Head. BMC 1956. F378. S3962.	
		Unc good lustre	£15.00
622.	1901	Old Head. BMC 1956. F378. S3962.	
		BU Full Lustre, lightly toning	£75.00
623.	1903	BMC 2223. F382. S3991.	
		BU Full Lustre, some toning spots.	£55.00
624.	1905	BMC 2225. F384. S3991.	
		BU Full Lustre, lustre streaky	£45.00
625.	1908	BMC 2228. F387. S3991.	
		BU Full Lustre, lightly toning.	£90.00
626.	1909	BMC 2229. F388. S3991.	
		GEF, traces of lustre	£30.00
627.	1916	BMC 2291. F395. S4056.	
		Unc good lustre	£35.00
628.	1916	BMC 2291. F395. S4056.	
		Choice Unc good lustre or better	£45.00

629.	1931	BMC 2312. F416. S4058.	
		Unc good lustre	£25.00
630.	1933	BMC 2316. F420. S4058.	
		Unc some lustre	£15.00
631.	1950	Bronze Proof. BMC 2451. F458 (R8).	
		S4118. FDC, toned	£20.00
632.	1953	S4155. Unc hints of lustre	£0.50
633.	1959	BMC 2519A. F483. S4158.	
		BU Full Lustre	£8.00
634.	1965	BU Full Lustre	£2.00

**FARTHING**

635.	1956	BMC 2527. S4159.	
		BU Full Lustre, lightly toning.	£4.50
636.	1956	BU Full Lustre	£5.00
637.	1955	BMC 2525. S4159.	
		BU Full Lustre, lightly toning.	£3.00
638.	1955	BU Full Lustre	£4.00
639.	1954	BMC 2523. S4159.	
		BU Almost Full Lustre	£2.00
640.	1954	BU Full Lustre, lightly toning.	£3.00
641.	1954	BU Full Lustre	£4.00
642.	1954	Investment parcel available for this date. All coins are BU Full Lustre. 50 Sparkling Gems. (Spink 2025 £10 BU (each)).	£65.00
643.	1953	(1 + A). BU Full Lustre, lightly toning.	£3.00
644.	1953	(1 + A). BU Full Lustre	£3.50
645.	1953	(2 + B). BMC 2521. S4156.	
		BU Almost Full Lustre	£0.60
646.	1953	(2 + B). BU Full Lustre, lightly toning.	£1.00
647.	1953	(2 + B). BU Full Lustre	£2.00
648.	1952	BMC 2487. S4119.	
		BU Full Lustre, lightly toning.	£3.00
649.	1952	BU Full Lustre	£4.00
650.	1951	BMC 2485. S4119.	
		BU Almost Full Lustre	£3.00
651.	1951	BU Full Lustre, lightly toning.	£4.00
652.	1950	BMC 2483. S4119.	
		BU Full Lustre, lightly toning.	£5.00
653.	1950	BU Full Lustre	£7.00
654.	1948	BMC 2479. S4116. Unc lustre	£2.00
655.	1948	BMC 2479. S4116.	
		BU Full Lustre	£6.00
656.	1947	BMC 2477. S4116.	
		BU Almost Full Lustre	£2.50



**FARTHING (CONTINUED)**

657.	1947	BU Full Lustre, lightly toning.	£3.50
658.	1946	BMC 2475. S4116. Unc good lustre	£1.00
659.	1946	BU Almost Full Lustre	£2.50
660.	1946	BU Full Lustre, lightly toning.	£4.00
661.	1945	BMC 2473. S4116. BU Almost Full Lustre	£2.00
662.	1945	BU Full Lustre, lightly toning.	£3.00
663.	1945	BU Full Lustre	£5.00
664.	1943	BMC 2469. S4116. BU Full Lustre, lightly toning.	£3.00
665.	1943	BU Full Lustre	£5.00
666.	1942	BMC 2467. S4116. BU Almost Full Lustre	£2.00
667.	1942	BU Full Lustre, lightly toning.	£3.00
668.	1942	BU Full Lustre, very lightly toning.	£3.50
669.	1942	BU Full Lustre	£5.00
670.	1936	Unc lustre	£2.00
671.	1936	BMC 2363. S4061. Unc lustre/Unc good lustre	£2.50
672.	1936	Unc good lustre	£3.00
673.	1933	George V V.I.P Proof Farthing. BMC 2353. Superb As Struck, traces of original red lustre. Encapsulated by NGC as PF64 BN (8221655-018) <b>(illustrated)</b>	£1,250.00



674.	1917	BMC 2329. S4059. Black Virtually BU	£6.50
675.	1917	BMC 2329. S4059. Black BU (Spink 2025 Cat value BU £20)	£10.00
676.	1891	NVF/VF	£2.50
677.	1890	BMC 1917. S3958. Choice BU Full Lustre Encapsulated by NGC as MS64 RD (4861396-012)	£95.00
678.	1890	BMC 1917. S3958. Choice BU Full Lustre Encapsulated by NGC as MS64 RD (4861396-013)	£95.00

679.	1886	NVF	£0.90
680.	1886	GVF	£2.00
681.	1886	Near EF	£2.25
682.	1886	Unc traces of lustre	£9.00
683.	1886	Unc lustre	£10.00
684.	1886	BMC 1913. S3958. Almost Unc with good lustre	£10.00
685.	1886	Unc good lustre	£15.00
686.	1886	BU Full Lustre, lightly toning	£32.00
687.	1886	BU Full Lustre, lightly toning	£32.00
688.	1884	A/Unc lustre	£18.00
689.	1878	BMC 1896. S3958. BU Full Lustre, lightly toning.	£75.00
690.	1875H	REG type. Near EF	£12.00
691.	1875H	REG type. BMC 1892. S3959. Unc lustre	£30.00
692.	1875H	REG type. BMC 1892. S3959. Unc good lustre	£45.00
693.	1875H	REG type. BMC 1892. S3959. Unc good lustre	£45.00
694.	1875H	REG type. BMC 1892. S3959. BU Almost Full Lustre	£80.00
695.	1873	Higher set 3 in date. BMC 1886. S3958. Almost Unc/EF, weak strike	£10.00
696.	1873	Higher set 3 in date. BU Full Lustre, light toning. (Spink 2025 Cat value BU £100)	£60.00
697.	1860	Beaded Border. BMC 1854. S3958. BU Almost Full Lustre	£80.00
698.	1852	BMC 1574. S3950. Bold GVF, some bruises to edge.	£75.00
699.	1847	BMC 1568. S3950. GEF a hint of lustre on reverse.	£65.00
700.	1846	From a small hoard of around 80 coins, these 1846 are all Almost Uncirculated and exhibit some original colour but they all have patchy toning. The appearance is of having been in the back of a fire grate or chimney at some time. They were found recently in Plymouth. For a rare date to turn up as a small hoard like this is indeed a rare event. They come in two varieties: a) with a small, neat 4 in the date and b) with a much larger 4, the result of the 4 being re- cut over a higher 4.	£45.00

**FARTHINGS (CONTINUED)**

701.	1844	Victoria. BMC 1565. S3950.	
		Fair/Near Fine	£50.00
702.	1841	Near VF	£12.00
703.	1839	2 Prongs to Trident. Fine	£10.00
704.	1834	Reverse A (centre lines are incuse).	
		BMC 1470. S3848. Near EF	£30.00
705.	1834	Reverse A (centre lines are incuse).	
		BMC 1470. S3848. EF or better	£40.00

**Second Issue Design (1826-1830)**

706.	1826	GVF	£10.00
------	------	-----	--------

**First Issue Design (1821-1826)**

707.	1822	Obverse 2 (lowest 3 leaves incuse central lines). BMC 1411. S3822.	
		Unc with a trace of lustre	£95.00
708.	1821	BMC 1407. S3822.	
		Choice Unc with lustre on both sides.	
			£115.00

709.	1807	Near VF	£15.00
710.	1806	BMC 1397 (Curls rendered with raised lines). S3782.	
		Unc with a hint of lustre	£85.00
711.	1799	BMC 1279. 3 Berries. S3779.	
		Unc with traces of lustre.	
		Encapsulated by NGC MS62 BN (6769621-003)	£110.00

**GEORGE III CURRENCY 1771-75**

712.	1773	Obverse 1. BMC 911. S3775.	
		Near EF	£175.00
713.	1773	Obverse 2. BMC 913. S3775.	
		Choice Uncirculated, fields prooflike with a delightful blue tone.	£275.00
714.	1754	GF	£10.00
715.	1754	S3722. GVF	£45.00
716.	1754	S3722. GVF	£45.00
717.	1749	BMC 889. S3722. GEF with traces of lustre, struck off centre.	£325.00
718.	1749	BMC 889. S3722. GEF with traces of lustre on both sides.	£425.00
719.	1739	BMC 869. S3720. EF, toned.	£275.00

720.	1720	BMC 816. Obverse Large Letters. S3662. Near Fine, very rare	£75.00
721.	1675	BMC 528. S3394.	
		About EF, a hint of lustre.	
		Encapsulated by NGC as AU58 BN (8221495-005)	£595.00
722.	1675	BMC 528. S3394.	
		EF hints of lustre	£695.00
723.	1674	BMC 527. Near VF	£175.00
724.	1674	BMC 527. S3394.	
		VF, very rare above Fine.	£250.00
725.	1672	BMC 519. S3394. Near VF	£95.00
726.	1672	BMC 519. S3394.	
		Near VF or better	£110.00

**PATTERN FARTHINGS OF CHARLES II**

727.	1676	BMC 492. Pattern Farthing in Silver.	
		Plain Edge. 5.90g.	
		EF and probably About As Struck for this issue.	£850.00

**FRACTIONAL FARTHINGS****HALF FARTHINGS**

728.	1839	BMC 1590. S3951.	
		BU Full Lustre, lightly toning.	
		Encapsulated by PCGS as MS63RB (200206.63/34733999)	£155.00

**THIRD FARTHINGS**

729.	1885	BMC 1937. S3960. GEF	£15.00
730.	1827	BMC 1453. S3827.	
		Almost Unc, hints of lustre	£125.00
731.	1827	BMC 1453. S3827.	
		BU Practically Full Lustre, a superb example.	£295.00

**QUARTER FARTHINGS**

732.	1839	BMC 1608. S3953.	
		Choice Uncirculated.	
		Encapsulated by NGC as MS63 BN (6769931-005)	£225.00

**DECIMAL ODDMENTS***Notes*

733.	£5	2006 Her Majesty Queen Elizabeth II 80th Birthday. L16. (Issued: 330,790) UK £5 Brilliant Uncirculated Coin in presentation folder. Cupro-nickel.	£12.00
734.	£5	2007 Diamond Wedding Crown. Her Majesty The Queen. His Royal Highness Prince Philip. L17. UK £5 Brilliant Uncirculated Coin in presentation folder. Cupro-nickel. (Issued: 260,856).	£12.00
735.	£5	2011 Countdown to London 2012. Cupro-nickel. BU, in presentation folder.	£15.00
736.	£5	2016 ALDERNEY £5 Poppy. Remembrance Day. BU	£15.00
737.	£5	2022 The Platinum Jubilee of Her Majesty The Queen. L95. 1952 - 2022 UK £5 Brilliant Uncirculated Coin in folder. Cupro-nickel.	£10.00
738.	50p	1969 H1. BU	£4.00
739.	50p	1973 Accession to European Economic Community. Reverse The inscription '50 PENCE' and the date of the year, surrounded by nine hands, symbolizing the nine members of the community, clasping one another in a mutual gesture of trust, assistance and friendship. H2. BU	£3.00
740.	50p	1973 Proof. Accession to European Economic Community. H2. FDC	£6.00
741.	50p	1976 H1. GEF	£2.00
742.	50p	1980 H1. BU, a couple of minor bagmarks.	£3.00
743.	50p	1984 H3. BU, a couple of bagmarks, reverse slightly toned.	£3.00
744.	50p	1994 Silver Proof 50p Coin. H6. 50th Anniversary of the Normandy Landings on D-Day. Issued 40,000. Certificate of Authenticity but no box. FDC	£25.00
745.	50p	2003 Silver Proof 50p Coin. H12. Centenary of the Suffragette Movement. Issued 6,267. Box and certificate. FDC	£28.00
746.	5p	1970 D1. BU	£1.00
747.	1/2p	1971 A1. BU	£1.00



---

*Notes*

---

